



**COMMERCIAL  
FIXTURES**

**HAZARDOUS  
LOCATIONS  
LUMINAIRES**

**LED  
GROW  
LIGHT**

**STREET & AREA  
LUMINAIRES**



Venas is a global leader in commercial and industrial LED lighting.

Founded in 2006 in Guangdong of China, Venas was a LED industry pioneer in the design and manufacturing of linear LED T8 lamps. Since that time, Venas has grown to be one of the highest volume manufacturers of all types of T8 and T5 lighting as well as a wide array of LED retrofit kits and luminaires for interior and exterior applications.

Venas manufacturing facilities now exceed 400,000 sq. ft. with over 1000 employees.

Venas has built a global reputation for innovative design and product reliability. Venas has literally millions of lamps and luminaires dependably operating around the world, providing an enhanced quality of light, safety and energy efficiency. To accomplish the very high volume production while maintaining quality product, Venas has high level of integrated testing and quality control as a part of all manufacturing processes. Additionally, Venas maintains a complete and comprehensive portfolio of compliance and performance certifications in all markets and industry segments.

Venas has built both a robust production infrastructure and a global management team to support product design, supply chain logistics, finance and marketing. Moreover, Venas has become very successful by building a global value chain where the team work of dedicated individuals build products that save energy, contribute to a cleaner environment and create business opportunities for economic prosperity around the world.

Both the LED Lighting Industry and the dynamics of global business are changing rapidly. As with many obstacles in the past and in the face of more to come, Venas remains true to one simple motivating idea: Bring High Efficiency to the Earth.

## Marks



REGISTRATION NO. Q1-3982

# Certificate of Registration

The American Petroleum Institute certifies that the quality management system of

**DONGGUAN PAN AMERICAN ELECTRONICS CO., LTD.**

**No. 175, Beiwang Road**

**Zhongtang Town**

**Dongguan City, Guangdong Province**

**People's Republic of China**

has been assessed by the American Petroleum Institute and found to be in conformance with the following:

## API Specification Q1

The scope of this registration and the approved quality management system applies to the:

**Design, Manufacture, Sales and Service of LED Explosion Proof Lights**

API approves the organization's justification for excluding:

**Validation of Processes**



**Effective Date:** AUGUST 12, 2021  
**Expiration Date:** AUGUST 12, 2024  
**Registered Since:** AUGUST 12, 2021

Vice President of Global Industry Services

This certificate is valid for the period specified herein. The registered organization must continually meet all requirements of API Spec Q1, *Specification for Quality Programs for the Petroleum, Petrochemical and Natural Gas Industry*, and the requirements of the Registration Agreement. Registration is maintained and regularly monitored through annual full system audits. This certificate has been issued from API offices located at 200 Massachusetts Avenue, NW Suite 1100, Washington, DC 20001-5571, U.S.A. It is the property of API, and must be returned upon request. **To verify the authenticity of this certificate, go to [www.api.org/compositelist](http://www.api.org/compositelist).**



## HAZARDOUS LOCATION LUMINAIRES



### HAZARDOUS LOCATION LUMINAIRES

► The Venas Hazardous Location series provides a complete range of certified explosion proof lighting including fixed and portable work lights, flood light, area light, emergency lights, warning lights, surface, pole and wall mounts, linear lighting and accessories.

Venas Hazardous Location series draws from years of research and design, a technical knowledge base, advanced in-house testing facility, high capacity manufacturing and quality assurance systems to service the largest industrial customers around the globe.

- Suitable for all kinds of Hazardous Locations including but not limited to petrochemical industry, chemical industry, painting industry, wine industry, food industry, mining locations, and marine locations.
- Top safety, high quality and long lifespan.
- Full line certification to requirements of UL 1598/UL 1598A/UL 844/IECEX/ATEX/ABS/DNV/API Spec Q1
- Suitable for petrochemical, marine, oil and gas, aerospace, food, metal industry and other harsh environments.

### ► A Series

Wide and narrow optics for uniform illumination. Copper free aluminum body and corrosion resistant frame. Up to 50,000 hours LED service life. Valid over the entire temperature range from -40°C to 50°C (-40 °F to 122°F).



Model:	EX-20W A2YZDA	EX-40W A2YZDA	EX-60W A2YZDA	EX-80W AYZDA	EX-100W AYZDA	EX-150W A3YZDA	EX-200W A3YZDA	EX-250W A4YZDA	EX-300W A4YZDA	EX-400W A4YZDA
Rated Wattage(W):	20	40	60	80	100	150	200	250	300	400
Rated Lumen(Lm):	2,800	5,600	8,400	11,200	14,000	21,000	28,000	35,000	42,000	56,000
Dimension(Inch):	9.84×6.54×6.3			12.6×9.45×6.3		14.96×9.06×7.41		16.5×11.8×8.27		
Voltage Option:	AC100-277V/DC12-48V/AC200-480V									
CCT:	2,200-7,000K									
Beam Angle(Deg):	40/60/90/120									
CRI:	>70									
Control Option:	0-10V DC									
Protection Class:	IP66									
Mounting:	Ceiling Mounting, Wall Mounting, Pole Mounting, Arm Mounting, Stanchion Mounting, Wall Mounting to Junction Box									
Compliance:	ETL/UL 1598/UL 1598A/UL 844/IECEX/ATEX/ABS/CB/API Spec Q1/CSA									
Rating:	Class I ,Division 2; Class II , Division 1; Class II , Division 2;ClassIII; Zone 1&2, Zone 21&22									

### ► B Series

Copper free aluminum housing. High impact resistance. Various installation methods. Stainless steel hardware. Replaceable LED driver board & driver. Marine rated powder coating.



Model:	EX-xxW BYZDA	EX-xxW B2YZDA	EX-xxW B3YZDA	EX-xxW B4YZDA	EX-xxW B5YZDA
Rated Wattage(W):	60/80	20/40	100/150/200	250/300/350/400	80/100
Rated Lumen(Lm):	8,400/11,200	2,800/5,600	14,000/21,000/28,000	35,000/42,000/49,000/56,000	8,400/14,000
Dimension(Inch):	9.57×9.06×6.7	Ø10.55×5.06	14.62×14.57×7.76	Ø18.9×9.5	13.58×12.95×6.5
Voltage Option:	AC100-277V/DC12-48V/AC200-480V				
CCT:	2,200-7,000K				
Beam Angle(Deg):	40/60/90/120				
CRI:	>70				
Control Option:	0-10V DC				
Protection Class:	IP66				
Mounting:	Ceiling Mounting, Wall Mounting, Pole Pendant Mounting, Stanchion Mounting, Wall Mounting				
Compliance:	ETL/UL 1598/UL 1598A/UL 844/IECEX/ATEX/ABS/CB/API Spec Q1/CSA				
Rating:	Class I ,Division 2; Class II , Division 1; Class II , Division 2;ClassIII; Zone 1&2, Zone 21&22				

## HAZARDOUS LOCATION LUMINAIRES

### ► B-F Series(Food Light)

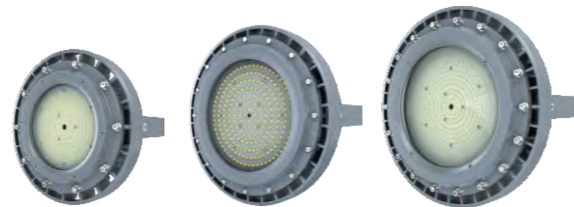
Carefully designed industrial lighting reduces the risk of broken glass falling on food. Outstanding longevity and waterproof luminaires. Replace the factory lights with a more eco-friendly system. Create a comfortable working environment while meeting all required lighting standards.



Model:	EX-20W B2YZDA-F	EX-40W B2YZDA-F	EX-60W BYZDA-F	EX-80W BYZDA-F	EX-100W B3YZDA-F	EX-150W B3YZDA-F	EX-200W B3YZDA-F
Rated Wattage(W):	20	40	60	80	100	150	200
Rated Lumen(Lm):	2,800	5,600	8,400	11,200	14,000	21,000	28,000
Dimension[Ø×H(Inch)]:	10.55×12.03/9.21/6.52		12.6×11.92/9.13/5.92		17.64×14.08/12.16/8.75		
Voltage Option:	AC 100-277V(by IC) or DC 12-48V						
CCT:	2,200-7,000K						
Beam Angle(Deg):	40/60/90/120						
CRI:	>70						
Warranty:	5 Years						
Protection Class:	IP66						
Mounting:	Hook Mounting, Wall Mounting to Junction Box, Pole Mounting, Stanchion Mounting						
Compliance:	ETL/UL844/IECEX/CB/ATEX/NSF/CSA						
Rating:	Class I ,Division 2; Class II , Division 1; Class II , Division 2;Class III; Zone 1&2, Zone 21&22						

### ► C Series

High quality SMT LED and Meanwell Driver. Heavy-duty and high impact resistance. Replaceable LED board and drivers. Marine rating powder coated finish treatment. Glass lens or polycarbonate lens to make various beam angles.

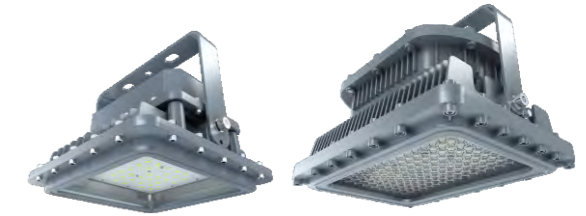


Model:	EX-20W C2YZDA	EX-40W C2YZDA	EX-60W C2YZDA	EX-80W C2YZDA	EX-100W CYZDA	EX-150W CYZDA	EX-200W C3YZDA	EX-250W C3YZDA	EX-280W C3YZDA
Rated Wattage(W):	20	40	60	80	100	150	200	250	280
Rated Lumen(Lm):	2,800	5,600	8,400	11,200	14,000	21,000	28,000	35,000	39,200
Dimension[Ø×H(Inch)]:	19.5×Ø14.1			20.6×Ø16.0		21.5×Ø17.4			
Voltage Option:	AC100-277V/DC12-48V/AC200-480V								
CCT:	2,200-7,000K								
Beam Angle(Deg):	40/60/90/120								
CRI:	>70								
Control Option:	0-10V DC								
Protection Class:	IP66								
Mounting:	Ceiling Mounting, Wall Mounting, Pole Mounting, Hook Pendant Mounting, Wall Mounting to Junction Box								
Compliance:	ETL/UL1598/UL1598A/UL844/IECEX/ATEX/ABS/CB/API Spec Q1/CSA								
Rating:	Class I, Division 1 & 2; Class II, Division 1; Class II, Division 2; Class III; Zone 1 & 2, Zone 21 & 22								

## HAZARDOUS LOCATION LUMINAIRES

### ► D Series

High quality SMT LED and Meanwell Driver. Heavy-duty and high impact resistance. Replaceable LED board and drivers. Marine rating powder coated finish treatment. Glass lens or polycarbonate lens to make various beam angles.



Model:	EX-20W D2YZDA	EX-40W D2YZDA	EX-60W D2YZDA	EX-80W D2YZDA	EX-100W DYZDA	EX-150W DYZDA	EX-200W DYZDA
Rated Wattage(W):	20	40	60	80	100	150	200
Rated Lumen(Lm):	2,800	5,600	8,400	11,200	14,000	21,000	28,000
Dimension(Inch):	11.6×11.6×9.56				15.7×11.3×10.0		
Voltage Option:	AC100-277V/DC12-48V/AC200-480V						
CCT:	2,200-7,000K						
Beam Angle(Deg):	40/60/90/120						
CRI:	>70						
Control Option:	0-10V DC						
Protection Class:	IP66						
Mounting:	Ceiling Mounting, Wall Mounting, Pole Mounting						
Compliance:	ETL/UL1598/UL1598A/UL844/IECEX/ATEX/ABS/CB/API Spec Q1/CSA						
Rating:	Class I ,Division 2; Class II , Division 1; Class II , Division 2;Class III; Zone 1&2, Zone 21&22						

### ► G Series

Copper free aluminum housing. Heavy duty and high impact resistance design. Stainless steel hardware. Anti-static and anti-corrosion coating. Flat and globe glass lens. Replaceable LED board & driver. Marine rated powder coating.



Model:	EX-10W GYZDA	EX-20W GYZDA	EX-30W GYZDA	EX-40W GYZDA	EX-50W GYZDA
Rated Wattage(W):	10	20	30	40	50
Rated Lumen(Lm):	1,400	2,800	4,200	5,600	7,000
Dimension(Inch):	H12.3×Ø6.9				
Voltage Option:	AC100-277V/DC12-48V				
CCT:	2,200-7,000K				
Beam Angle(Deg):	40/60/90/120				
CRI:	>70				
Control Option:	0-10V DC				
Protection Class:	IP66				
Mounting:	Ceiling Mounting, Wall Mounting, Pole Mounting, Pendant Mounting				
Compliance:	ETL/UL1598/UL1598A/UL844/IECEX/ATEX/ABS/CB/API Spec Q1				
Rating:	Class I, Division 1 & 2; Class II, Division 1; Class II, Division 2; Class III				

## HAZARDOUS LOCATION LUMINAIRES

### ▶ H Series

Copper free aluminum housing. Heavy duty and high impact resistance design. Stainless steel hardware. Replaceable LED board & driver. Thermal shock resistant PC diffuser. Design for humid, corrosive and dusty locations. Marine rated powder coating.



Model:	EX-20W H2YZDA	EX-40W H2YZDA	EX-40W H4YZDA	EX-60W H4YZDA	EX-80W H4YZDA
Rated Wattage(W):	20	40	40	60	80
Rated Lumen(Lm):	2,800	5,600	5,600	8,400	11,200
Dimension(Inch):	23.6×4.8×4.7		47.2×4.8×4.7		
Voltage Option:	AC100-277V/DC12-48V/AC200-480V				
CCT:	2,200-7,000K				
Beam Angle(Deg):	120				
CRI:	>70				
Control Option:	0-10V DC				
Protection Class:	IP65				
Mounting:	Ceiling Mounting, Wall Mounting, Pole Bracket Mounting				
Compliance:	ETL/UL1598/UL1598A/UL844/IECEX/ATEX/ABS/CB/API Spec Q1				
Rating:	Class I, Division 2; Class II, Division 1; Class II, Division 2; Class III; Zone 2, Zone 21 & 22				

### ▶ I Series

Copper-free aluminum housing. Stainless steel hardware. High impact resistance design. Replaceable LED board & driver. Marine rated powder coating. High explosion-proof rating for high harsh locations.



Model:	EX-20W I2YZDA	EX-40W I2YZDA	EX-60W I2YZDA	EX-60W I4YZDA	EX-80W I4YZDA	EX-100W I4YZDA	EX-120W I4YZDA
Rated Wattage(W):	20	40	60	60	80	100	120
Rated Lumen(Lm):	2,800	5,600	8,400	8,400	11,200	14,000	16,800
Dimension(Inch):	23.3×5.51×5.22			46.1×5.51×5.22			
Voltage Option:	AC100-277V/DC12-36V/AC200-480V						
CCT:	2,200-7,000K						
Beam Angle(Deg):	40/60/90/120						
CRI:	>70						
Control Option:	0-10V DC						
Protection Class:	IP66						
Mounting:	Ceiling Mounting, Wall Mounting, Pole Bracket Mounting, Chain Mounting, Pole Pendant Mounting						
Compliance:	ETL/UL1598/UL1598A/UL844/IECEX/ATEX/ABS/CB/API Spec Q1						
Rating:	Class I, Division I&2; Class II, Division 1; Class II, Division 2; Class III; ; Zone 1 & 2, Zone 21 & 22						

## HAZARDOUS LOCATION LUMINAIRES

### ▶ J Series

Integral battery back-up power supply and fully automatic operation. 3 hours battery back-up time. Low wattage for energy saving. Outdoor use and resistant to salt water. Built-in battery replacement notification. Lightweight and reasonable size.



Model:	EX-3W JYZD	EX-5W JYZD
Rated Wattage(W):	3	5
Dimension(Inch):	17.4×16.42×4.54	
Voltage Option:	AC100-277V; DC12-36V	
CCT:	Red/Green	
Protection Class:	Suitable for Wet Location	
Mounting:	Wall Mounting with Arm, Pendant Mounting, Pole Mounting	
Compliance:	UL924/UL844/API Spec Q1/CSA/UL1598/UL1598A/ETL	
Rating:	Class I, Division I&2; Class II, Division 1; Class II, Division 2; Class III	

### ▶ ES01 Series

Suitable for wall, ceiling or pendant mounting. Can be fitted to order with emergency exit signs. Central locking. Low working wattage for energy saving. 15w version available, switchable to ordinary illumination. Up to 5 years limited warranty option. Emergency time at least 180 minutes. Up to 50,000 hours lifespan.



Model:	EX-1W EYZDA	EX-2W EYZDA	EX-3W EYZDA	EX-15W EYZDA
Rated Wattage(W):	1	2	3	15
Voltage Option:	AC100-277V; AC/DC12-36V			
Dimension(Inch):	18.7×7.8×3.8(L×H×W)			
CCT:	2,200-7,000K(EX-15W EYZDA)			
Protection Class:	IP66			
Mounting:	Wall Mounting, Ceiling Mounting, Pendant Mounting			
Compliance:	IECEX/CB/ATEX/API Spec Q1			
Rating:	Zone 1 & 2, Zone 21 & 22			

## HAZARDOUS LOCATION LUMINAIRES

### ▶ ES02 Series

High durability and reliability. High leakproofness up to IP66. Low working wattage for energy saving. 3/4" NPT or M25 conduit hubs. Edge-lit sign. Can be used outdoors. Emergency time at least 180 minutes. Up to 50,000 hours lifespan.



Model:	EX-ES02A1	EX-ES02A2	EX-ES02B1	EX-ES02B2	EX-ES02B3	EX-ES02B4	EX-ES02B5
Wattage(W):	5/10/8/15/20/16/24		7-20	5	5	7	7
Rated Lumen(Lm):	650/1,300/1,040/1,950/2,600/2,080/3,120(ES02A1/ES02A2)				910-2,600(ES02B1)		
Dimension(Inch):	15.2×7.4×5.4	15.2×7.4×5.4	17.4×15.0×6.9	17.4×10.5×6.4	17.4×18.4×6.9	17.4×15×6.4	17.4×22.9×6.9
Voltage:	AC100-277V, or DC 12-48V						
Lifespan:	Up to 50,000 Hours						
Protection Class:	IP66						
Mounting:	Wall Mounting with Bracket, Ceiling Mounting with Arm						
Compliance:	IECEX/CB/ATEX/API Spec Q1						
Rating:	Zone 1 & 2, Zone 21 & 22						

### ▶ ES03 Series

High durability and reliability. High leak-proofness up to IP66. Low working wattage for energy saving. Pendant, wall and end bracket mounting provide universal installation options. Edge-lit sign. Emergency time at least 180 minutes. Up to 50,000 hours lifespan.



Model:	EX-8W ES03C1N50	EX-12W ES03C1N50	EX-8W ES03A1N50	EX-12W ES03A1N50	EX-8W ES03A2N50	EX-12W ES03A2N50	EX-5W ES03A3N50
Rated Wattage(W):	8	12	8	12	8	12	5
Rated Lumen(Lm):	1,040	1,560	1,040	1,560	/	/	/
Dimension(Inch):	15.6×14.76×6.76		18.3×17.7×6.7		18.3×26.5×6.7		18.3×19×6.7
Voltage:	AC100-277V, or DC 12-48V						
Housing:	A360 Die-casting Aluminum						
Indicator:	Tempered Glass						
Bolts:	Stainless Steel						
Sign Panel:	Glass						
Protection Class:	IP66						
Mounting:	Wall Mounting, Bracket Mounting, Pendant Mounting						
Compliance:	ETL/UL924/UL844/UL1598/UL1598A/CSA						
Rating:	Class I, Division I&2; Class II, Division 1; Class II, Division 2; Class III						

## HAZARDOUS LOCATION LUMINAIRES

### ▶ ES05 Series

Aluminum alloy housing and glass indicator. High durability and reliability. Low working wattage for energy saving. Emergency battery available. Excellent heat sinking design.



Model:	ES05
Rated Wattage:	3W+5W
Emergency Battery:	2
Material:	Aluminum Alloy Housing, Glass Indicator
Compliance:	UL844, UL1598, UL924
Rating:	Class I, Division 1 & 2; Class II, Division 1; Class II, Division 2; Class III

### ▶ K Series

The hazardous location K series is rated and certified for use in all types of hazardous application. The K series is an emergency maker and alarm sounding device with 3 hours of battery powered illumination in power outage condition.



Model:	EX-11db EWD
Dimension(Inch):	6.78×8.35
Voltage:	AC100-277/200-480V, or DC 12/24V
Flash Indicator:	150/Minute
CCT:	Red
Protection Class:	IP66
Mounting:	Wall Plate & Conduit Suspension Mount Standard
Compliance:	ETL/UL1598/UL1598A/UL844/IECEX/CB/ATEX/ABS/DNV/API Spec Q1
Rating:	Class I, Division 2; Class II, Division 1; Class II, Division 2; Class III/Zone 1&2, Zone 20&21&22

## HAZARDOUS LOCATION LUMINAIRES

### ▶ L Series

The hazardous location L series is rated and certified for use in all types of hazardous application. The L series is a hand-held work site luminaire for task or general illumination in small and confined spaces.



Model:	EX-5W LXYZDA	EX-7W LXYZDA	EX-9W LXYZDA
Rated Wattage(W):	5	7	9
Rated Lumen(Lm):	650	910	1,170
Dimension(Inch):	H20.61×Ø5.12		
Voltage Option:	AC 100-277V/200-480V		
CCT:	2,200-7,000K		
Protection Class:	IP67		
Mounting:	Hand Grip/Integrated Hanger Hook		
Compliance:	UL 1598A/UL1598UL844/API Spec Q1/IECEX/ATEX/CB		
Rating:	Class I , Division 1; Class I , Division 2; Class II, Division 1; Class II, Division 2; Class III; Zone 1&2, Zone 21&22		

### ▶ STA Series

ATEX and IECEX certified. Copper free aluminum body and frame-corrosion resistant. Easy for angle adjustment. Heat-sinking technology ensures long lifespan and low light decline. High luminous efficacy-Up to 120-140 Lm/W. Valid over the entire temperature range from -40°C to 60°C (-40 °F to 140°F).



Model:	EX-300W STA1	EX-100W STA2	EX-150W STA2	EX-200W STA2	EX-100W STA3	EX-150W STA3	EX-200W STA3
Rated Wattage(W):	250	100	150	200	100	150	200
Efficiency:	120-140 lm/W						
Dimension(Inch):	10.4×16.3×2.9	10.9×17.1×3.3		13.0×21.7×2.8			
Voltage Option:	AC 100-305/180-525V						
CCT:	2,700-7,000K						
Beam Angle(Deg):	Type III 10-120 Degree						
CRI:	>70						
Control:	0-10V						
Protection Class:	IP66						
Mounting:	Wall Mounting, Pole Mounting						
Compliance:	UL844/ATEX/IECEX/CB						
Rating:	Class I ,Division 2; Class II , Division 1; Class II , Division 2;Class III; Zone 1&2, Zone 21&22						

## HAZARDOUS LOCATION LUMINAIRES

### ▶ STA4 Series

STA4 Series is a LED flood light rated for hazardous and wet locations. Die-cast aluminum housing and toughened glass lampshade. Degree of protection: IP66.



Model:	EX-xxxW-STA4-A	EX-xxxW-STA4-B	EX-xxxW-STA4-C
Rated Wattage(W):	35	70	140
Efficiency:	140 lm/W		
Dimension(Inch):	9.4×6.8×5.1	11.8×7.7×6.2	15.4×12.9×6.5
Voltage Option:	AC200-277V, 50/60Hz		
CCT:	2,200-6,500K		
CRI:	>70		
Emergency Time	>1.5Hrs		
Compliance:	IECEX/ATEX/CB		
Rating:	Zone 1 & 2, Zone 21 & 22		

### ▶ O Series

Compact structure, small size and lightweight for easy installation. High vibration and high impact resistance. Protective metal cage against light potential damage. Durable design for rugged environment and work site. Impact resistance and thermally stable toughened glass.



Model:	EX-10W OYZDA	EX-20W OYZDA	EX-30W OYZDA	EX-40W OYZDA
Rated Wattage(W):	10	20	30	40
Rated Lumen(Lm):	1,400	2,800	4,200	5,600
Dimension(Inch):	H13.08×W5.71			
Voltage Option:	AC 100-277V/200-480V			
CCT:	2,200-7,000K			
Beam Angle(Deg):	40/60/90/120			
CRI:	>70			
Housing Material:	Copper Free Aluminum			
Protection Class:	IP66			
Mounting:	Ceiling Mounting, Wall Mounting, Pole Mounting, Wall Mounting with Reflector			
Compliance:	UL844/UL1598A/ATEX/IECEX/API Spec Q1/CB			
Rating:	Class I ,Division 2; Class II , Division 1; Class II , Division 2;Class III; Zone 1&2, Zone 21&22			



## HAZARDOUS LOCATION LUMINAIRES

### ► Q Series

Light-weight design by aluminum. Heavy-duty and high impact resistance. Round low bay lighting with motion sensor. Unique design enhance airflow for greater heat dissipation. Isolated LED compartment reduce temperature within LED driver housing. Field installation in a few minutes.



Model:	EX-20W Q1YZDA	EX-40W Q1YZDA	EX-60W Q1YZDA	EX-80W Q1YZDA	EX-100W Q2YZDA	EX-150W Q2YZDA	EX-200W Q2YZDA
Rated Wattage(W):	20	40	60	80	100	150	200
Rated Lumen(Lm):	2,800	5,600	8,400	11,200	14,000	21,000	28,000
Dimension(Inch):	H12.5×W11.1				H16.7×W13.8		
Voltage Option:	AC 100-277V/200-480V						
CCT:	2,200-7,000K						
Beam Angle(Deg):	40/60/90/120						
CRI:	>70						
Control:	0-10V DC						
Protection Class:	IP66						
Mounting:	Bracket Wall Mounting, Bracket Ceiling Mounting, Pole Mounting						
Compliance:	ATEX/IECEX/API Spec Q1/CB						
Rating:	Zone 2, Zone 21 & 22						

### ► S Series

Fixture constructed of die-casting aluminum and epoxy powder coat. Compact structure, small size and lightweight for easy installation. High vibration and impact resistant. Heat and impact resistant glass lens. Changeable light source and battery to make replacement very easy.



Model:	EX-20W S1YZDA	EX-40W S1YZDA	EX-60W S1YZDA	EX-80W S1YZDA	EX-100W S2YZDA	EX-150W S2YZDA	EX-200W S2YZDA
Rated Wattage(W):	20	40	60	80	100	150	200
Rated Lumen(Lm):	2,800	5,600	8,400	11,200	14,000	21,000	28,000
Dimension(Inch):	W10.63×H11.99				W10.63×H18.17		
Voltage Option:	AC 100-277V/200-480V						
CCT:	2,200-7,000K						
Beam Angle(Deg):	40/60/90/120						
CRI:	>70						
Control:	DC 0-10V						
Protection Class:	IP66						
Mounting:	Bracket Surface Mounting, Pendant Mounting, Pole Mounting						
Compliance:	IECEX/ATEX/CB						
Rating:	Zone 1 & 2, Zone 21 & 22						

## HAZARDOUS LOCATION LUMINAIRES

### ► R Series

ATEX and IECEx certified. Heavy duty and impact resistance. Heat-sinking technology ensures long lifespan and low light decline. Waterproof and vapor/ dust/explosion proof.



Model:	EX-20W R2YZDA	EX-30W R2YZDA	EX-40W R4YZDA	EX-50W R4YZDA	EX-60W R4YZDA
Rated Wattage:	2×10W/2ft	2×15W/2ft	2×20W/4ft	2×25W/4ft	2×30W/4ft
Rated Lumen(Lm):	2,800	4,200	5,600	7,000	8,400
Dimension(Inch):	27.5x8.7x4.8		52.0x8.7x5.5		
Voltage Option:	AC 100-277V/200-480V				
CCT:	2,200-7,000K				
Beam Angle(Deg):	120				
CRI:	>70				
Control:	DC 0-10V				
Protection Class:	IP66				
Mounting:	Surface Mounting, Pendant Mounting, Wall Mounting, Pole Mounting				
Compliance:	UL1598/UL844/ATEX/IECEX/API Spec Q1/CB/UL1598A				
Rating:	Class I, Division 2; Class II, Division 2; Class III; Zone 1 & 2, Zone 21 & 22				

### ► FLB Series

Anti-static and anti-corrosion coating. Thermal resistance, corrosion resistance, high light transmission lens. Advanced quadratic light distribution design results in high uniformity. Easy and simple installation.



Model:	EX-FLBXXxFTxPxxW ZXYZ
Rated Wattage(W):	A series: 1 x (15 to 28)W, 2 x (15 to 28)W, 3x (15 to 28)W B series: 1 x (20 to 45)W, 2 x (20 to 45)W, 3x (20 to 45)W C series: 1 x (36 to 72)W, 2 x (36 to 72)W, 3x (36 to 72)W
LED Tube Length:	2FT(0.6m), 4FT(1.2m)
Voltage Option:	AC100-277, 50/60Hz or DC12-48V
Ambient Temperature:	-40°C to +60°C
Beam Angle(Deg):	30-180
CCT:	3,000-6,500K
Backup Battery:	3 Hours
Protection Class:	IP66/67/68
Mounting:	Wall Mounting, Surface Mounting, Hook Pendant Mounting, Ring Pendant Mounting, Pole Mounting
Compliance:	IECEX/ATEX/CB
Rating:	Zone 1 & 2, Zone 21 & 22

## HAZARDOUS LOCATION LUMINAIRES

### ► FLC Series

ATEX and IECEx Certified. Die-cast aluminum body and frame-corrosion resistant. Innovative design with excellent heat dissipation performance. Heat-sinking technology ensures long lifespan and low light decline.



Model:	EX-xxW FLC2 AZDA	EX-xxW FLC2 AZDA	EX-xxW FLC4 AZDA	EX-xxW FLC4 AZDA	EX-xxW FLC5 AZDA	EX-xxW FLC5 AZDA
Rated Wattage(W):	20	40	50	80	50	80
Dimension(Inch):	30.9×7.0×3.8		51.3×7.0×3.8		63.7×7.0×3.8	
Voltage Option:	AC 100-277, 50/60Hz or DC 36V					
Ambient Temperature:	-20 °Cto +40°C(T6), -40°Cto +60°C(T5)					
Efficiency:	130 lm/W					
Beam Angle(Deg):	40/60/90					
CCT:	2,700-6,500K					
Dimming:	0-10V					
Protection Class:	IP66/67					
Mounting:	Bracket Surface Mounting, Hook and Rope Mounting, Pole Mounting					
Compliance:	IECEX/ATEX/CB					
Rating:	Class I ,Division 2; Class II , Division 1; Class II , Division 2;ClassIII; Zone 1&2, Zone 21&22					

### ► FLD Series

Die-cast aluminum body and frame-corrosion resistant. Innovative design with excellent heat dissipation performance. Heat-sinking technology ensures long lifespan and long light decline.



Model:	EX-xxW-FLD2-1YZD	EX-xxW-FLD4-1YZD	EX-xxW-FLD2-2YZD	EX-xxW-FLD4-2YZD
Rated Wattage(W):	20/40/60	40/80/120	40/80/120	80/160/240
Dimension(Inch):	24.4×12×3.7	50.4×12×3.7	25.2×24×3.7	50.4×24×3.7
Voltage Option:	AC100-277V			
Ambient Temperature:	-40°C-+40°C/-40°C-+50°C/-40°C-+60°C			
Efficiency:	130 lm/W			
Beam Angle(Deg):	120°C			
CCT:	2700K-7000K			
Protection Class:	IP66			
Mounting:	Ceiling Mounting/Pandent Mounting/Embedded Mounting			
Compliance:	UL844;60079			
Rating:	Class I ,Division 2; Class II , Division 1; Class II , Division 2;ClassIII; Zone 1&2, Zone 21&22			

## HAZARDOUS LOCATION LUMINAIRES

### ► FLE Series

ATEX and IECEx Certified. Die-cast aluminum body and frame-corrosion resistant. Innovative design with excellent heat dissipation performance. Heat-sinking technology ensures long lifespan and low light decline.



Model:	EX-20/40W-FLE2 AZDA	EX-50/80W-FLE4 AZDA	EX-50/80W-FLE5 AZDA
Rated Wattage(W):	20/40	50/80	50/80
Dimension(Inch):	26.6×6.2×8.5	50.2×6.2×8.5	62.9×6.2×8.5
Voltage Option:	AC 100-277, 50/60Hz or DC 36V		
Ambient Temperature:	-20 to +40°C(T6), -40 to +55°C(T5)		
Efficiency:	130 lm/W		
Beam Angle(Deg):	40/60/90		
CCT:	2,700-6,500K		
Dimming:	0-10V		
Protection Class:	IP66		
Mounting:	Bracket Surface Mounting, Hook and Rope Mounting, Pole Mounting		
Compliance:	IECEX/ATEX/CB		
Rating:	Class I ,Division 2; Class II , Division 1; Class II , Division 2;ClassIII; Zone 1&2, Zone 21&22		

### ► FLF Series

FLF Series is the ideal choice for marine and hazardous applications. Available in 5 lengths. Innovative design with excellent heat dissipation performance. Heat-sinking technology ensures long lifespan and low light decline.



Model:	EX-xxxW-FLF1 AZDA	EX-xxxW-FLF2 AZDA	EX-xxxW-FLF3 AZDA	EX-xxxW-FLF4 AZDA	EX-xxxW-FLF5 AZDA
Rated Wattage(W):	10/20/30	20/30/40/50	40/50/60/70	40/50/60/70/80	60/70/80/90/100
Efficiency:	130 lm/W				
Voltage Option:	AC100-277V, 50/60Hz				
Emergency Time:	>1.5H				
CCT:	2,200-6,500K				
CRI:	>70				
Protection Class:	IP66				
Mounting:	Wall Mounting, Hook Mounting, Pole Mounting				
Rating:	Class I ,Division 2; Class II , Division 1; Class II , Division 2;ClassIII; Zone 1&2, Zone 21&22				

## HAZARDOUS LOCATION LUMINAIRES

### ► V Series

Fully electrical circuit control. Outdoor use and resistant to saltwater. Effective panel illumination and visible through smoke or obstruction. The latest LED technology contributes to the high efficiency of this emergency lighting products.



Model:	EX-1W VYZDA	EX-2W VYZDA	EX-3W VYZDA
Rated Wattage(W):	1	2	3
Voltage Option:	AC: 100-277V; AC/DC: 12-48V		
Dimension(Inch):	16.12×11.08×1.82		
Emergency(optional):	3 Hours		
CCT:	2,200-7,000K		
Mounting:	Pendant Mounting		
IP:	66		
Rating:	Class I, Division 2; Class II, Division 1; Class II, Division 2; Class III; Zone 2, Zone 21 & 22		
Compliance:	UL844/UL1598/UL1598A/IECEX/ATEX/CB /CSA/ETL		

### ► W Series

Multi-functions, can transform into different lights to suit different locations and needs. Various materials and colors for lamp and amplifier are optional. Diversity of mounting methods. Suitable for explosion-proof environment. Operating temperature: -40°C to +60°C.



Model:	EX-WSL XxxJSxxdB-1	EX-WSLE xxWSxxdB-1	EX-WSL XxxJSxxdB-2	EX-WSLE xxWSxxdB-2	EX-WSS xxdB-1	EX-WSS xxdB-2	EX-WSL XxxJ-3	EX-WSLE xxW-3
Max Wattage/Joule:	5J	35W	5J	35W	25W	25W	5J	10W
Voltage:	AC220-240V; or AC220-240V, DC24V(18-36)							
Decibel:	100/120						/	/
IP:	66							
Mounting:	Bracket Mounting, Pole Mounting, Hook and Fast Connection, Junction Box Mounting							
Operating Temperature:	-40°C to +60°C							
Compliance:	ATEX/IECEX/CB							
Housing:	Die-casting aluminum							
Rating:	Zone 1 & 2, Zone 21 & 22							

## HAZARDOUS LOCATION LUMINAIRES

### ► WKC Series

Safe and reliable. Strong impact resistance. Environmental friendly. Easily switch between different modes. Handy, portable and magnet adsorption. Protection class: IP65.



Model:	EX-xxxW-WKC1YZDA	EX-xxxW-WKC2YZDA
Rated Wattage(W):	10	
Rated Lumen(Lm):	1,000	1,170
Dimension(Inch):	5.1×5.1×9.1	11.1×7.0×4.9
Voltage:	100-240V	
CCT:	2,200-7,000K	
CRI:	>70	
Compliance:	ATEX/IECEX/CB/API Spec Q1	
Rating:	Zone 2, Zone 21 & 22	

### ► WKE Series

ATEX and IECEx certified. Approved for explosive Gas and Dust atmospheres. Ultra bright high power LED light 350+ lumens. Spot and flood switchable beam options. Up to 11 hours duration on full power, 22 hours in signal light mode. T4 temperature class.



Model:	EX-002W-WKE-RY	EX-002W-WKE-RG
Rated Wattage(W):	2	
Ambient Temperature:	-20°C to +40°C	
Housing Material:	Impact Resistant Thermoplastic, Electrostatic Non-hazardous	
Light Source Output:	>350Lm(White)	
Light Source Life:	>25,000 H	
Power Source Type:	Rechargeable Battery, Lithium-Ion	
Power Source Life:	Up to 500 Recharge Cycles	
Light Duration:	Up to 11/22 Hrs	
Recharge Time:	4.5H	
Compatible Charger:	AC 90-264V	
IP:	66	
Compliance:	UL844/ATEX/IECEX/CB	
Rating:	Class I, Division 1 & 2; Class II, Division 1; Class II, Division 2; Class III; Zone 0, 1 & 2, Zone 20, 21 & 22	

## HAZARDOUS LOCATION LUMINAIRES

### ► WKG Series

ATEX and IECEx certified. T4 temperature class. Proven impact resistance. Single handed switching. Switch protection shroud.



Model:	EX-002W-WKG
Rated Wattage(W):	2
Rated Lumen(Lm):	210
Dimension(Inch):	6.8×1.8(L×W)
Ambient Temperature:	-40°C to 40°C
All Sealing Gasket:	COT: -40°C to 200°C
Compliance:	Group I Mining Approval
Rating:	Zone 0, 1 & 2, Zone 21 & 22

### ► HB Series

Aluminum body and frame-corrosion resistant. High vibration and impact resistant. Designed for rugged environment and work site. Instant illumination and restrike - no warm-up time required. High luminous efficacy-Up to 140/150 Lm/W. Valid over the entire temperature range from -40°C to 70°C (-40 °F to 158°F).



Model:	HB-150W D1YZ	HB-300W D2YZ	HB-600W D4YZ
Rated Wattage:	150	300	600
Housing Material:	Aluminum+Glass		
Dimension(Inch):	19.29.4x11.02(DxH)	23.23x12.6x9.69	25.4x23.23x9.69
Voltage:	AC127-270V/AC347-480V, 50/60Hz		
CCT:	2,200-7,000K		
Beam Angle(Deg):	120		
CRI:	>70		
Protecting Degree:	IP66		
Mounting:	Bracket Mounting, Hook Pendant Mounting		
Compliance:	UL1598/UL1598A/ETL/CB/RoHS/EMC		

## HAZARDOUS LOCATION LUMINAIRES

### ► HDA Series

ATEX and IECEx certified. Impact resistant, thermoplastic, electrostatic plastic enclosure. T4 temperature class. High power LED light source. Lightweight, ergonomic design. Single handed switching. Adjustable, removable headband. Max. surface temperature (dust): 130°C.



Model:	EX-002W-HDA(1)	EX-002W-HDA(2)
Rated Wattage:	2W	
Voltage:	4.5V	
Ambient Temperature:	-20°C to +40°C	
Beam Type:	High/Low/Flashing	
Light Source Output:	118/60 Lm	155/132/78/34Lm
Light Source Lifespan:	>25, 000 Hours	
Battery Type:	3xAAA Batteries	
Battery Level Indicator:	Full-time Battery Indicator	
Light Duration:	7.5/16H	6.4/5.5/8/14H
Protection Class:	IP54	
Compliance:	ATEX/IECEX/CB	
Rating:	Zones 0, 1 and 2, Gas, Groups IIC; Zones 20, 21 and 22, Dust, Groups IIIC	

### ► Ex-MV01 Series

ATEX and IECEx certified. Plastic body and frame-corrosion resistant. Easy for angle adjustment. Portable working and emergency light. High luminous efficacy-Up to 1600 Lm. Valid over the entire temperature range from -20°C to 40°C (-4 °F to 104°F).



Model:	Ex-19.5W-MV01
Rated Wattage:	Max 19.5W
Rated Lumens(Lm):	Max 1,600
Dimension(Inch):	14.0×8.1(L×W)
Deployable Height :	Min.22.3, Max.31.5, or Min.25.0, Max.35.8
Voltage:	10.8V(Battery); AC100V/277V(Charger)
CCT:	30:3,000K, 40:4,000K, 50:5,000K, 65:6,500K
Beam Angle(Deg):	125
Working Time :	10H(Max.)
Charging Voltage:	DC 10.8-14.4V
Protection Class:	IP20
Battery Capacity:	10.8V, 9Ah
Compliance:	UL844/UL1598/ATEX/IECEX/CSA/CB
Rating:	Class1, Division I ,Group A, B, C, D; Zone 0,1&2

## HAZARDOUS LOCATION LUMINAIRS

### ►WKD Series

Aluminum body and frame-corrosion resistant. Valid over the entire temperature range from -20°C~ + 40/50°C(-4°F ~ +104/122°F). Instant illumination and restrike-no warm-up time required. Easy for angle adjustment. Lifespan up to 100,000 hours. Warranty: 5 Years.



Model:	HB-10Y-WKD-A-YZ	HB-10Y-WKD-B-YZ	HB-10Y-WKD-C-YZ
Rated Wattage:	10W	10W	30-60W
Voltage:	120-277V AC, 50/60Hz	120-277V AC, 50/60Hz	120V AC, 50/60Hz
Dimension(Inch):	6.9X4.8(WXH)	9.2X38.3(WXH)	14.2X15.5(WXH)
CRI:	>70		
CCT:	3,000-5,000K		
Beam Angle(Deg):	Type III 30-90 Degree	Type III 30-90 Degree	Type III 100 Degree
Efficiency:	120~140 Lm/W		
Operating Temperature:	-20°C to + 50°C	-20°C to + 50°C	-20°C to + 40°C
Protecting Degree:	Wet location	Damp location	Wet location
Housing Material:	Aluminum and Tempered Glass		
Compliance:	ETL		

### ►EX-A5/A6/A7/A8/A9/A10 Series Explosion-proof Luminaire

Wide and narrow optics for uniform illumination. Copper free aluminaire body and corrosion resistant frame. Up to 50,000 hours LED service life.



Model:	A5	A6	A7	A8	A9	A10
Rated Wattage(W):	50/60/70/80/100/120/135/150/180/200/240	50/60/70/80/100/120	100/120/140/160/200/240/270/300/360/400/480	100/120/140/160/200/240	50/60/70/80/100/120/135/150/180/200/240	50/60/70/80/100/120
Voltage:	AC110-277V/AC120-277V/AC220-240V					
Dimension(Inch):	18.1x21.5x3.2	15.4x16.7x2.8	34.4x16.5x3.2	26.6x13.8x2.8	18.1x12.6x3.2	15.3x9.8x2.8
CRI:	>70					
CCT:	2,200-7,000K					
Beam Angle(Deg):	30/60/90/120/T2-M/T3-M/T4-M					
Operating Temperature:	Normal: -40°C - +45°C for T6/T80°C -40°C - +60°C for T5/T95°C Emergency: -10°C - +45°C for T6/T80°C -10°C - +60°C for T5/T95°C					
Protecting Degree:	IP66					
Compliance:	IECEX/ATEX/CB					

## MOTION SENSOR&JUNCTION BOX

### ►Ex-IN01 Series

ATEX and IECEx certified. Copper-free aluminum body, plastic-sprayed surface. Compact and small housing, can be fixed inside most luminaires. An innovative and active motion detector with 5.8GHz HF system. Wide detection area, up to 16m in diameter. Automatic switch on/off based on motion and ambient light level.



Model:	Ex-IN01-□ MS/OS/MO
Power Consumption:	≤0.5W(standby)
Rated Load:	120V@400W;220-240V@800W;277V@1,000W
HF System:	5.8GHz±75MHz, ISM wave band
Rated Voltage:	120~277VAC, 50Hz
Detection Zone:	Max. (D x H): 16m x 15m
Detection Sensitivity:	25%/50%/75%/100%
Hold Time:	5s/30s/90s/3min/20min/30min
Protecting Degree:	IP66-IP67
Motion Detection:	0.5~3m/s
Detection Angle:	150° (wall installation), 360° (ceiling installation)
Daylight Sensor:	5Lux/15Lux/30Lux/50Lux/100Lux/Disable
Standards:	UL/IECEX/ATEX/CB
Rating:	Class I, Division 1 & 2; Class II, Division 1; Class II, Division 2; Class III/Zone 1 & 2, Zone 21& 22

### ►Ex-HD51 Series

For general wiring in hazardous locations. Copper free aluminum enclosure. Ex d type flameproof enclosure. Four types of enclosures available. Degree of protection: IP66/IP67.



Model:	Ex-HD51-A Ex-HD51-B Ex-HD51-C Ex-HD51-KB1 Ex-HD51-D Ex-HD51-E Ex-HD51-F Ex-HD51-KYD
Rated Voltage:	Max.800VAC
Rated Current:	24A, 32A, 41A
Ambient Temperature:	-60°C to + 60°C
Terminal:	Type A, D: 2.5mm <sup>2</sup> , 4mm <sup>2</sup> , Max. 4 sections; Type B, E: 2.5mm <sup>2</sup> , 4mm <sup>2</sup> , (Max. 6 sections); Type C, F: 2.5mm <sup>2</sup> (Max. 12 sections), 4mm <sup>2</sup> ( Max. 10 sections), 6mm <sup>2</sup> (Max. 8 sections); Type KB1, KYD: 2.5mm <sup>2</sup> , Max. 3 sections.
Cross Sectional Area of Terminal Cables:	Type A, B, C, D, E, F: 0.2-4mm <sup>2</sup> ; Type F, C: 0.2-6mm <sup>2</sup> ; Type KB1, KYD: 0.2-2.5mm <sup>2</sup> .
Cable Entry:	Type A, B, C, D, E, F, KB1, KYD: M20×1.5. Type A, B, C, D, E, F, KB1, KYD: M25×1.5. Type C, E, F: M32×1.5. Type E, F: M40×1.5. Type F: M50×1.5. Type F: M63×1.5.
Type of Flameproof Joint:	Type A, B, C, D, E, F: Threaded joints; Type KB1: Flanged and threaded joints
Compliance:	UL1203
Rating:	Class I, Division 1 & 2; Class II, Division 1; Class II, Division 2; Class III/Zone 1 & 2, Zone 21& 22

## JUNCTION BOX & CONTROL UNIT SYSTEMS

### ▶ Ex-HD51 Series

For general wiring in hazardous locations. Copper free aluminum enclosure. Ex d type flameproof enclosure. Four types of enclosures available. Degree of protection: IP66/IP67.



Model:	Ex-HD51-A	Ex-HD51-B	Ex-HD51-C	Ex-HD51-KB1
Rated Voltage:	Max.800VAC			
Rated Current:	24A, 32A, 41A			
Ambient Temperature:	-60°C to + 55°C			
Terminal:	Type A, B, KB1: 2.5mm <sup>2</sup> , 4mm <sup>2</sup> , Max. 6 sections; Type C: 2.5mm <sup>2</sup> , Max. 12 sections; 4mm <sup>2</sup> , Max. 10 sections; 6mm <sup>2</sup> , Max. 8 sections.			
Cross Sectional Area of Terminal Cables:	Type A, B, KB1: 0.2-4mm <sup>2</sup> ; Type C: 0.2-6mm <sup>2</sup> .			
Cable Entry:	Type A, B, KB1: (M20, M25)×1.5 stopping plug Type C: (M20, M25, M32)×1.5 stopping plug; NPT 1/2", NPT3/4", NPT1" stopping plugs			
Type of Flameproof Joint:	Type A, B, C: Threaded joints; Type KB1: Flanged and threaded joints			
Compliance:	ATEX/IECEX/CB			
Standards:	EN 60079-0, EN 60079-1, EN 60079-31, IEC 60079-0, IEC 60079-1, IEC 60079-31			
Rating:	Zone 1 & 2, Zone 21& 22			

### ▶ Control Unit Systems

Copper free aluminum, plastic-sprayed surface. Ex d enclosure. Cable entry customizable. Degree of protection: IP66. Dual and tripartite systems able to install different collocation (such as pushbutton, switch, indicator, ammeter and voltmeter).



Model:	Ex-ZA
Rated Voltage:	Max.800V AC
Rated Current:	Max.10A(AC), 6A(DC); 25A(AC)
Ambient Temperature:	-60°C to +60°C
Cable Entry:	2 ×M25×1.5 stopping plug or 2×NPT3/4"
Cable Entry Device:	Optional
Type of Flameproof Joint:	Cylindrical Joint, Threaded Joint
Built-in Components:	EX-HA pushbutton, EX-D indicator, Switches, Ammeter/Voltmeter
Compliance:	UL/ATEX/IECEX
Standard:	EN IEC 60079-0, EN IEC 60079-1, EN IEC 60079-31
Rating:	Zone 1 & 2, Zone 21& 22

## DISTRIBUTION EQUIPMENT

### ▶ Ex-PD61 Series

Copper free aluminum, plastic-sprayed surface. Ex d type flameproof enclosure. Can be used as terminal box, distribution box and control box. Degree of protection: IP66. Compliance: UL/ATEX /IECEX. Rating: Zone 1 & 2, Zone 21& 22.



Model:	Ex-PD61
Rated Voltage:	Max.100V AC, 50/60Hz
Rated Current:	Max.1,200A
Ambient Temperature:	-60°C to + 60°C
Cable Entry:	Standard M□×1.5 Plug
Cable Entry Device:	Optional
Entry Direction:	Bottom
Installation Type:	Wall Mounting(Standard); Bracket Mounting(Optional)
Type of Flameproof Joint:	Cylindrical Joint, Threaded Joint, Plane Joint
Built-in Components:	Main switch: miniature circuit breaker(MCB) or molded case circuit breaker (MCCB) (Noted: earth leakage protection on request); Branch switch: miniature circuit breaker(MCB) or molded case circuit breaker (MCCB) (Noted: earth leakage protection on request); Terminal; Indicator light EX-D: Red, green, yellow, blue; Button EX-A: Red, green, yellow; AC contactor; Thermal overload relay; PLC programmer; Soft starter; Control switch EX-K; Ammeter/Voltmeter
Standard:	EN IEC 60079-0, EN IEC 60079-1, EN IEC 60079-31

### ▶ Ex-PD61-JX-IIB Series

Copper free aluminum, plastic-sprayed surface. Ex d type flameproof enclosure. Degree of protection: IP67-IP67. Rating: Zone 1 & 2, Zone 21& 22.



Model:	Ex-PD61-JX-IIB
Rated Voltage:	Max.800V
Rated Current:	Cable Cross Section(mm <sup>2</sup> ) Rated Current(A)
Terminal:	Phoenix or Weidmuller
Ambient Temperature:	-60°C to + 60°C
Type of Flameproof Joint:	Plane Joint
Compliance:	UL/ATEX/IECEX
Standard:	EN IEC 60079-0, EN IEC 60079-1, EN IEC 60079-31

	2.5	4	6	10	16	35	70	240
	24	32	41	57	76	125	192	400

### ▶ Ex-PD61-ZM Series

Copper free aluminum, stainless steel. Plastic-sprayed surface. Earth leakage protection device is optional. Degree of protection: IP66-IP67. Rating: Zone 1 & 2, Zone 21 & 22.



Model:	Ex-PD61-ZM
Rated Voltage:	Max.690V AC, 50/60Hz
Rated Current:	Max.100A
Branch Current:	1A, 2A, 4A, 6A, 10A, 16A, 20A, 25A, 32A
Ambient Temperature:	-60°C to + 55°C
Cable Entry:	Standard M□×1.5 Plug
Cable Entry Device:	Optional
Entry Direction:	Bottom( in and out)
Installation Type:	Wall Mounting(Standard); Bracket Mounting(Optional)
Type of Flameproof Joint:	Cylindrical Joint, Threaded Joint, Plane Joint
Built-in Components:	Main switch: miniature circuit breaker(MCB) or molded case circuit breaker (MCCB) (Noted: earth leakage protection on request); Branch switch: miniature circuit breaker(MCB) or molded case circuit breaker (MCCB) (Noted: earth leakage protection on request); Terminal; Indicator: Red, green, yellow
Compliance:	UL/IECEX/ATEX
Standard:	EN IEC 60079-0, EN IEC 60079-1,EN IEC 60079-31

### ▶ Ex-PD61-DL Series

Copper free aluminum, stainless steel. Plastic-sprayed surface. Earth leakage protection device is optional. Degree of protection: IP66-IP67. Compliance: UL/IECEX/ATEX. Standard: EN IEC 60079-0, EN IEC 60079-1, EN IEC 60079-31. Rating: Zone 1 & 2, Zone 21 & 22.



Model:	Ex-PD61-DL
Total Power Supply:	Max.690V AC, 50/60Hz
Rated Voltage:	AC 380V/400V, 50/60Hz
Rated Current:	Max.630A
Branch Current:	1A, 2A, 4A, 6A, 10A, 16A, 20A, 25A, 32A, 40A, 50A, 63A, 80A, 100A, 125A, 160A, 200A, 250A, 320A, 400A
Cable Entry:	Standard M□×1.5 Plug
Ambient Temperature:	-60°C to + 55°C
Cable Entry Device:	Optional
Entry Direction:	Bottom( in and out)
Installation Type:	Wall Mounting(Standard); Bracket Mounting(Optional)
Type of Flameproof Joint:	Cylindrical Joint, Threaded Joint, Plane Joint
Built-in Components:	Main switch: miniature circuit breaker(MCB) or molded case circuit breaker (MCCB) (Noted: earth leakage protection on request); Branch switch: miniature circuit breaker(MCB) or molded case circuit breaker (MCCB) (Noted: earth leakage protection on request); Terminal; Indicator: Red, green, yellow

### ▶ Ex-PD61-ZC Series

Copper free aluminum, plastic-sprayed surface. Ex d type flameproof enclosure. Degree of protection: IP66-IP67. Rating: Zone 1 & 2, Zone 21 & 22.



Model:	Ex-PD61-ZC
Rated Voltage:	Max.415V AC
Rated Current:	10A
Ambient Temperature:	-60°C to + 60°C
Cable Entry:	Standard M□×1.5 Plug
Cable Entry Device:	Standard M□×1.5
Entry Direction:	Bottom
Built-in Components:	EX-A Pushbutton, EX-D Indicator, EX-K Control Switch, Explosion-proof Ammeter/Voltmeter
Installation Type:	Wall Mounting
Type of Flameproof Joint:	Cylindrical Joint, Threaded Joint, Plane Joint
Compliance:	UL/ATEX/IECEX
Standard:	EN IEC 60079-0, EN IEC 60079-1,EN IEC 60079-31

### ▶ Ex-PD61-QD Series

Copper free aluminum, plastic-sprayed surface. Degree of protection: IP66-IP67. Rating: Zone 1 & 2, Zone 21 & 22.



Model:	Ex-PD61-QD
Rated Voltage:	380/400V AC, 50/60Hz
Cable Entry:	Standard M□×1.5 Plug
Cable Entry Device:	Optional
Entry Direction:	Bottom( in and out)
Type of Flameproof Joint:	Cylindrical Joint, Threaded Joint, Plane Joint
Built-in Components:	Miniature circuit breaker(MCB) or moulded case circuit breaker( MCCB) AC contactor, thermal overload relay, indicator, button
Ambient Temperature:	T6/T80°C for Tamb: -60°C to +50°C; T5/T90°C for Tamb: -60°C to +60°C
Compliance:	UL/ATEX/IECEX
Standard:	EN IEC 60079-0, EN IEC 60079-1,EN IEC 60079-31

## DISTRIBUTION EQUIPMENT & CABLE GLAND

## CABLE GLAND

### ▶ Ex-PD61-LK Series

Copper free aluminum, plastic-sprayed surface. Earth leakage protection device is optional. Degree of protection: IP66-IP67. Compliance: UL/ATEX/IECEX. Standard: EN IEC 60079-0, EN IEC 60079-1, EN IEC 60079-31. Ambient Temperature: -60°C to +60°C. Rating: Zone 1 & 2, Zone 21 & 22.



Model:	Ex-PD61-LK-63/□/□/□	Ex-PD61-LK-160/□/□/□	Ex-PD61-LK-250/□/□/□
Circuit Breaker:	Miniature Circuit Breaker (MCB)	Moulded Case Circuit Breaker (MCCB)	Moulded Case Circuit Breaker (MCCB)
Max. Working Voltage:	440V AC, 50/60Hz	690V AC, 50/60Hz, 500V DC	690V AC, 50/60Hz, 500V DC
Rated Voltage:	1P/230V AC, 2P/3P/4P/400V AC, 50/60Hz	-	-
Rated Current:	1/2/4/6/10/16/20/25/32/40/50/63A	Max. 160A	Max. 250A
Number of Pole:	1P, 2P, 3P, 4P	3P, 4P	3P, 4P
Breaking Capacity:	6kA, 10kA, 15kA	380/415V AC 50/60Hz, 36kA/50kA 440V AC 50/60Hz, 30kA/45kA	380/415V AC 50/60Hz, 36kA/50kA 440V AC 50/60Hz, 25kA/40kA
Impulse Withstand Voltage:	6kV	8kV	8kV
Tripping Characteristic:	Instantaneous Tripping Range (5-10) In or (7-10) In or (10-14) In	Thermomagnetic Type	Thermomagnetic Type
Cable Entry:	Standard 1-16A: 2×M25×1.5 Plugs 2-32A: 2×M32×1.5 Plugs 40-63A: 2×M40×1.5 Plugs	80-100A: 2×M50×1.5 Plugs 125-160A: 2×M63×1.5 Plugs	2×M63×1.5 Plugs
Type of Flameproof Joint:	Cylindrical Joint, Plane Joint		

### ▶ Ex-QM03-C1K Series

Single seal, suitable for armored cable. Degree of protection: IP66/IP68.



Model:	Ex-QM03-C1K
Marking ATEX:	II2 GD Ex eb IIC Gb/ Ex db IIC Gb Ex tb IIIC Db IP66/IP68
Marking IECEX:	Ex eb IIC Gb/ Ex db IIC Gb Ex tb IIIC Db IP66/IP68
Ambient Temperature:	-50°C ≤ Tamb ≤ +80°C
Connection Thread:	Metric Thread, NPT Thread
Standard:	IEC60079-0:2017, IEC60079-1:2014, IEC60079-7:2017, IEC60079-31:2013, EN60079-0:2012+A11:2013, EN60079-1:2014, EN60079-7:2015, N60079-31:2014
Rating:	Zone 1 & 2, Zone 21 & 22

### ▶ Ex-QM01-A1 Series

Ex e, structure. Single seal, suitable for unarmored cable. Degree of protection: IP66/IP68.



Model:	Ex-QM01-A1
Marking ATEX:	II2 GD Ex eb IIC Gb Ex tb IIIC Db IP66/IP68
Marking IECEX:	Ex eb IIC Gb Ex tb IIIC Db IP66/IP68
Ambient Temperature:	-50°C ≤ Tamb ≤ +80°C
Connection Thread:	Metric Thread, NPT Thread
Standard:	IEC60079-0:2017, IEC60079-1:2014, IEC60079-7:2017, IEC60079-31:2013, EN60079-0:2012+A11:2013, EN60079-1:2014, EN60079-7:2015, N60079-31:2014
Rating:	Zone 1 & 2, Zone 21 & 22

### ▶ Ex-QM04-B1K Series

Dual seal, suitable for armored cable. Degree of protection: IP66/IP68.



Model:	Ex-QM04-B1K
Marking ATEX:	II2 GD Ex eb IIC Gb/ Ex db IIC Gb Ex tb IIIC Db IP66/IP68
Marking IECEX:	Ex eb IIC Gb/ Ex db IIC Gb Ex tb IIIC Db IP66/IP68
Ambient Temperature:	-50°C ≤ Tamb ≤ +80°C
Connection Thread:	Metric Thread, NPT Thread
Standard:	IEC60079-0:2017, IEC60079-1:2014, IEC60079-7:2017, IEC60079-31:2013, EN60079-0:2012+A11:2013, EN60079-1:2014, EN60079-7:2015, N60079-31:2014
Rating:	Zone 1 & 2, Zone 21 & 22



## CABLE GLAND

### ▶ Ex-QM05-C1K Series

Single seal, suitable for armored cable.  
Degree of protection: IP66/IP68.



Model:	Ex-QM05-C1K
Marking ATEX:	II2 GD Ex eb IIC Gb/ Ex db IIC Gb Ex tb IIIC Db IP66/IP68
Marking IECEx:	Ex eb IIC Gb/ Ex db IIC Gb Ex tb IIIC Db IP66/IP68
Ambient Temperature:	-50°C ≤ Tamb ≤ +80°C
Connection Thread:	Metric Thread, NPT Thread
Standard:	IEC60079-0:2017, IEC60079-1:2014, IEC60079-7:2017, IEC60079-31:2013, EN60079-0:2012+A11:2013, EN60079-1:2014, EN60079-7:2015, N60079-31:2014
Rating:	Zone 1 & 2, Zone 21 & 22

### ▶ Ex-QM06-B1K Series

Dual seal, suitable for armored cable.  
Degree of protection: IP66/IP68.



Model:	Ex-QM06-B1K
Marking ATEX:	II2 GD Ex eb IIC Gb/ Ex db IIC Gb Ex tb IIIC Db IP66/IP68
Marking IECEx:	Ex eb IIC Gb/ Ex db IIC Gb Ex tb IIIC Db IP66/IP68
Ambient Temperature:	-50°C ≤ Tamb ≤ +80°C
Connection Thread:	Metric Thread, NPT Thread
Standard:	IEC60079-0:2017, IEC60079-1:2014, IEC60079-7:2017, IEC60079-31:2013, EN60079-0:2012+A11:2013, EN60079-1:2014, EN60079-7:2015, N60079-31:2014
Rating:	Zone 1 & 2, Zone 21 & 22

### ▶ Ex-QM10-B1 Series

ATEX and IECEx Certified. Ex d structure.  
Single seal, suitable for unarmored cable.  
Degree of protection: IP66/IP68.



Model:	Ex-QM10-B1
Marking ATEX:	II2 GD Ex eb IIC Gb/ Ex db IIC Gb Ex tb IIIC Db IP66/IP68
Marking IECEx:	Ex eb IIC Gb/ Ex db IIC Gb Ex tb IIIC Db IP66/IP68
Ambient Temperature:	-50°C ≤ Tamb ≤ +80°C
Connection Thread:	Metric Thread, NPT Thread
Standard:	IEC60079-0:2017, IEC60079-1:2014, IEC60079-7:2017, IEC60079-31:2013, EN60079-0:2012+A11:2013, EN60079-1:2014, EN60079-7:2015, N60079-31:2014
Rating:	Zone 1 & 2, Zone 21 & 22

## CABLE GLAND

### ▶ Ex-QM12-A1 Series

Ex e structure. Sealing ring, suitable for unarmored cable.  
Degree of protection: IP66/IP68.



Model:	Ex-QM12-A1
Marking ATEX:	II2 GD Ex eb IIC Gb Ex tb IIIC Db IP66/IP68
Marking IECEx:	Ex eb IIC Gb Ex tb IIIC Db IP66/IP68
Ambient Temperature:	-50°C ≤ Tamb ≤ +80°C
Connection Thread:	Metric Thread, NPT Thread
Standard:	IEC60079-0:2017, IEC60079-1:2014, IEC60079-7:2017, IEC60079-31:2013, EN60079-0:2012+A11:2013, EN60079-1:2014, EN60079-7:2015, N60079-31:2014
Rating:	Zone 1 & 2, Zone 21 & 22

### ▶ Ex-QM13-B1T Series

Dual seal, suitable for unarmored cable.  
Degree of protection: IP66/IP68.



Model:	Ex-QM13-B1T
Marking ATEX:	II2 GD Ex eb IIC Gb/ EX db IIC Gb Ex tb IIIC Db IP66/IP68
Marking IECEx:	Ex eb IIC Gb/ EX db IIC Gb Ex tb IIIC Db IP66/IP68
Ambient Temperature:	-50°C ≤ Tamb ≤ +80°C
Connection Thread:	Metric Thread, NPT Thread
Standard:	IEC60079-0:2017, IEC60079-1:2014, IEC60079-7:2017, IEC60079-31:2013, EN60079-0:2012+A11:2013, EN60079-1:2014, EN60079-7:2015, N60079-31:2014
Rating:	Zone 1 & 2, Zone 21 & 22

### ▶ Ex-QM18-C1 Series

Single seal, suitable for unarmored cable.  
Degree of protection: IP66/IP68.



Model:	Ex-QM18-C1
Marking ATEX:	II2 GD Ex eb IIC Gb/ EX db IIC Gb Ex tb IIIC Db IP66/IP68
Marking IECEx:	Ex eb IIC Gb/ EX db IIC Gb Ex tb IIIC Db IP66/IP68
Ambient Temperature:	-50°C ≤ Tamb ≤ +80°C
Connection Thread:	Metric Thread, NPT Thread
Standard:	IEC60079-0:2017, IEC60079-1:2014, IEC60079-7:2017, IEC60079-31:2013, EN60079-0:2012+A11:2013, EN60079-1:2014, EN60079-7:2015, N60079-31:2014
Rating:	Zone 1 & 2, Zone 21 & 22

## CABLE GLAND

### ▶ Ex-QM21-C1K Series

Single seal, suitable for armored cable.  
Degree of protection: IP66/IP68.



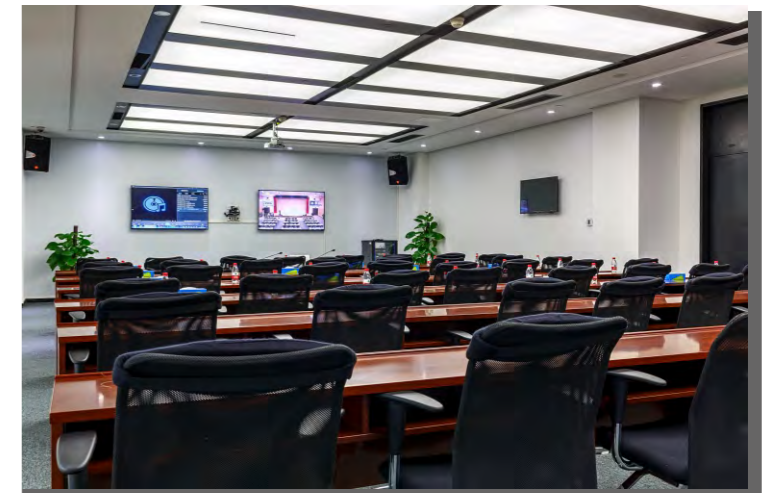
Model:	Ex-QM22-C1K
Marking ATEX:	II2 GD Ex eb IIC Gb/EX db IIC Gb Ex tb IIIC Db IP66/IP68
Marking IECEx:	Ex eb IIC Gb/EX db IIC Gb Ex tb IIIC Db IP66/IP68
Ambient Temperature:	-50°C ≤ Tamb ≤ +80°C
Connection Thread:	Metric Thread, NPT Thread
Standard:	IEC60079-0:2017, IEC60079-1:2014, IEC60079-7:2017, IEC60079-31:2013, EN60079-0:2012+A11:2013, EN60079-1:2014, EN60079-7:2015, N60079-31:2014
Rating:	Zone 1 & 2, Zone 21 & 22

### ▶ Ex-QM22-B1K Series

Dual seal, suitable for armored cable.  
Degree of protection: IP66/IP68.



Model:	Ex-QM22-B1K
Marking ATEX:	II2 GD Ex eb IIC Gb/EX db IIC Gb Ex tb IIIC Db IP66/IP68
Marking IECEx:	Ex eb IIC Gb/EX db IIC Gb Ex tb IIIC Db IP66/IP68
Ambient Temperature:	-50°C ≤ Tamb ≤ +80°C
Connection Thread:	Metric Thread, NPT Thread
Standard:	IEC60079-0:2017, IEC60079-1:2014, IEC60079-7:2017, IEC60079-31:2013, EN60079-0:2012+A11:2013, EN60079-1:2014, EN60079-7:2015, N60079-31:2014
Rating:	Zone 1 & 2, Zone 21 & 22



## ▶ LED LINEAR LAMPS

▶ Beginning in 2006, Venas has been a global industry leader in the innovation, design and high volume manufacturing of T8 and T5 LED tubes. Venas continues that leadership with constant updates to application design, product safety and LED efficacy. The Venas LED tubes series covers the entire range of UL Type A / Type A+B / Type C linear lamps with multiple watts, tube material types, with all types of connector, size and shape configurations.

UL Type A-B Dual Mode Ballast Compatible / Line Voltage. The most versatile and time saving retrofit available.

UL Type A Ballast Compatible. Direct retrofit without ballast removal. Compatible with all electronic ballast types.

UL Type C Exterior Power Supply. Low voltage DC power tubes for enhanced safety in any retrofit troffer or luminaire.

Material options including aluminum/polycarbonate, nano plastic, glass, frosted or clear lens, dry and damp location ratings.

Connector options including T8-G13, T5-G5, 2G11, R17D, PL, PLL and single or dual end power connection.

## LED TUBE SERIES



### ► Dual Mode T8 Type A+B Series Aluminum/PC Tube

Time saving retrofit using existing ballasts or ballast bypass line voltage. Enhanced safety design and long life, reliable components.



Model:	2FT-10W	2FT-15W	2FT-15W UBend	3FT-15W
Part Number:	ZY-T8-10W600 BIXX	ZY-T8-15W600 BIXX	ZY-T8-15W600U	ZY-T8-15W900 BIXX
Length(Inch):	24	24	24	36
Rated Wattage(W):	10	15	15	15
Rated Lumen(Lm):	1,400	2,100	2,100	2,100
CCT:	3,000-5,000K			
Compliance:	UL/cUL/DLC5.1			
System Watts per Ballast Factor (Low/Med/High):	11.5/12.5/13.5	16.5/17.5/20.5	16.5/17.5/20.5	16.5/17.5/20.5

Model:	4FT-10W	4FT-12W	4FT-15W	4FT-18W
Part Number:	ZY-T8-10W1200 BIXX	ZY-T8-12W1200 BIXX	ZY-T8-15W1200 BIXX	ZY-T8-18W1200 BIXX
Length(Inch):	48			
Rated Wattage(W):	10	12	15	18
Rated Lumen(Lm):	1,400	1,680	2,100	2,520
CCT:	3,000-5,000K			
Compliance:	UL/cUL/DLC5.1			
System Watts per Ballast Factor (Low/Med/High):	11.5/12.5/13.5	13.5/16.5/17.5	16.5/17.5/20.5	19.5/21.5/22.5
System Lumens per Ballast Factor (Low/Med/High):	1,437/1,550/1,680	1,680/2,069/2,180	2,069/2,180/2,560	2,430/2,680/2,810

Model:	4FT-20W	4FT-18W
Part Number:	ZY-T8-20W1200 BIXX	ZY-T8-18W1500 BIXX
Length(Inch):	48	60
Rated Wattage(W):	20	18
Rated Lumen(Lm):	2,800	2,520
CCT:	3,000-5,000K	
Compliance:	UL/cUL/DLC5.1	
System Watts per Ballast Factor (Low/Med/High):	21.5/23.5/24.5	19.5/21.5/22.5
System Lumens per Ballast Factor (Low/Med/High):	2,680/2,930/3,060	2,430/2,680/2,810

## LED TUBE SERIES

### ► Dual Mode T8 Type A+B Series Nano Plastic Tube

Time saving retrofit using existing ballasts or ballast bypass line voltage. Enhanced safety design and long life, reliable components in an unbreakable, thermally conductive tube.



Model:	2FT-10W	3FT-10W	4FT-10W	4FT-12W	4FT-15W
Part Number:	ZY-T8P-10W600 BIXX	ZY-T8P-10W900 BIXX	ZY-T8P-10W1200 BIXX	ZY-T8P-12W1200 BIXX	ZY-T8P-15W1200 BIXX
Length(Inch):	24	36	48		
Rated Wattage(W):	10	10	10	12	15
Rated Lumen(Lm):	1,400	1,400	1,400	1,680	2,100
CCT:	3,000-5,000K				
Compliance:	UL/cUL/DLC5.1				
System Watts per Ballast Factor (Low/Med/High):	11.5/12.5/13.5		11.5/12.5/13.5	13.5/16.5/17.5	16.5/17.5/20.5
System Lumens per Ballast Factor (Low/Med/High):	/	/	1,437/1,550/1,680	1,680/2,069/2,180	2,069/2,180/2,560

## LED TUBE SERIES

## LED TUBE SERIES

### ▶ Ballast Compatible T8 Type A Series Aluminum/PC Tube

Time saving retrofit using existing ballasts. Compatible with all electronic ballast types. Enhanced safety design and long life, reliable components.



Model:	2FT-12W	3FT-12W	4FT-12W	4FT-14W
Part Number:	BT812W2FT	BT812W3FT	BT812W4FT	BT814W4FT
Length(Inch):	24	36	48	
Rated Wattage(W):	12	12	12	14
Rated Lumen(Lm):	1,680	1,680	1,680	1,960
CCT:	3,000-5,000K			
Compliance:	UL/cUL			
System Watts per Ballast Factor (Low/Med/High):	13.5/14.5/16.5		13.5/14.5/16.5	
System Lumens per Ballast Factor (Low/Med/High):	1,765/1,885/2,145	1,765/1,885/2,145	1,765/1,885/2,145	2,015/2,145/2,405



### ▶ External Driver T8 Type C Series Nano Plastic Tube

Time saving retrofit using existing using an external class 2 power supply for enhanced safety, dimmability and extended LED lifetime in an unbreakable, thermally conductive plastic tube.



Model:	2FT-10W	3FT-10W	4FT-10W	4FT-12W	4FT-15W
Part Number:	ZY-T8P-10W 600 BONT	ZY-T8P-10W 900 BONT	ZY-T8P-10W 1200 BONT	ZY-T8P-12W 1200 BONT	ZY-T8P-15W 1200 BONT
Length(Inch):	24	36	48	48	
Rated Wattage(W):	10			12	15
Rated Lumen(Lm):	1,400			1,680	2,100
CCT:	3,000-5,000K				
Compliance:	UL/cUL				

### ▶ INTERIOR RETROFITS & LUMINAIRES

- ▶ Venas interior luminaires are all designed to provide both the efficiency and maintenance free operation of LED with the form factors and features that designers, engineers and architects require for a full range of applications. These luminaires are ideal for commercial and industrial environments and add to both the aesthetics and general quality of illumination. Venas products are used around the world in retail, education, factories and warehouses and many more applications.
- ▶ Global, national and regional compliance to all the most recent standards for safety, performance and application efficacy.
- ▶ Global production capacities with regional warehousing to fulfill project requirements of any scale large or small.
- ▶ Constant design and performance updates responding to real world demands for the newest features in all market segments.
- ▶ With millions of units manufactured and installed, Venas products demonstrate a product reliability rate second to none in the lighting industry.

## HIGH BAY LUMINAIRES

## HIGH BAY LUMINAIRES

### ►UFO(U-A)Series



It features a black die-cast aluminum housing. Dark powder coat corrosion resistant finish provides long hours salt fog rating. Corrosion resistant external hardware standard.



Model:	U-80WA1 YZTXX	U-100WA1 YZTXX	U-150WA2 YZTXX	U-200WA3 YZTXX
Rated Wattage(W):	80	100	150	200
Rated Lumen 1(Lm):	11,200	14,000	21,000	28,000
Rated Lumen 2(Lm):	13,600	17,000	25,500	34,000
Light Efficiency(Lm/W):	140/170			
Dimension(mm):	Ø258×159	Ø258×159	Ø299×160	Ø347×169
Voltage:	120-277V/120-347V			
CRI:	70/80(optional)			
CCT:	2,200/2,700/3,000/4,000/4,500/5,000K/5,500/6,500K			
Compliance:	ETL / CETL / DLC			
Beam Angle(Deg):	60°/90°/120°			
Power Factor:	>0.9			
Ambient Temperature:	-40°F (-40°C) to 131°F(+55°C)			
Protection Class:	IP65			

### ►UFO(U-C) Series



It features a black die-cast aluminum housing. Dark powder coat corrosion resistant finish provides long hours salt fog rating. Corrosion resistant external hardware standard.



Model:	U-80WC1 YZTXX	U-100WC1 YZTXX	U-80WC2 YZTXX	U-100WC3 YZTXX	U-80WC4 YZTXX	U-100WC4 YZTXX
Rated Wattage(W):	80	100	150	200	240	300
Rated Lumen 1(Lm):	11,200	14,000	21,000	28,000	36,000	42,000
Rated Lumen 2(Lm):	13,600	17,000	25,500	34,000	40,800	51,000
Light Efficiency(Lm/W):	140/170					
Dimension(mm):	Ø253×149	Ø253×149	Ø308×155	Ø353×H160	Ø404×168	Ø404×168
Voltage:	120-277V/120-347V					
CRI:	70/80(optional)					
CCT:	2,200/2,700/3,000/4,000/4,500/5,000K/5,500/6,500K					
Compliance:	ETL / CETL / DLC					
Beam Angle(Deg):	60°/90°/120°					
Power Factor:	>0.9					
Ambient Temperature:	-40°F (-40°C) to 131°F(+55°C)					
Protection Class:	IP65					

### ►UFO(U-E)Series



It features a black die-cast aluminum housing. Dark powder coat corrosion resistant finish provides long hours salt fog rating. Corrosion resistant external hardware standard.



Model:	U-80WE1 YZTXX	U-100WE1 YZTXX	U-150WE2 YZTXX	U-200WE3 YZTXX	U-240WE3 YZTXX
Rated Wattage(W):	80	100	150	200	240
Rated Lumen 1(Lm):	11,200	14,000	21,000	28,000	36,000
Rated Lumen 2(Lm):	13,600	17,000	25,500	34,000	40,800
Light Efficiency(Lm/W):	140/170				
Dimension(mm):	Φ248×H167	Φ248×H167	Φ289×174	Φ336×191	Φ336×191
Voltage:	120-277V/120-347V				
CRI:	70/80(optional)				
CCT:	2,200/2,700/3,000/4,000/4,500/5,000K/5,500/6,500K				
Compliance:	DLC/ETL/CE/CB/ENEC/EMC/SAA				
Beam Angle(Deg):	90°/120°(fixed); 60°-105°(adjustable)				
Power Factor:	>0.9				
Ambient Temperature:	-40°F (-40°C) to 131°F(+55°C)				
Protection Class:	IP65				

### ►Linear High Bay Series



Designed for economical retrofit cost, low operating cost and a 100% maintenance free lifespan. The Linear High Bay Series replace all types of fluorescent high bay troffers in warehouse, supermarket, retail, education and all other general area interior illumination applications.



Ultrathin 35mm

Model:	H2	H3	H5	H6
Rated Wattage(W):	100	220	160	320
Rated Lumen(Lm):	14,000/17,000	30,800/37,400	22,400/27,200	44,800/54,400
Dimension(Inch):	23.62×10.55×1.42	47.56×10.55×1.42	23.62×15.75×1.42	47.55×15.75×1.42
Voltage:	AC 120-277V			
Control System:	Microwave Dimmer			
CCT:	3,500-5,000K			
Compliance:	UL/DLC			
Beam Angle(Deg):	105			
Power Factor:	0.9			
CRI:	80			
Protection Class:	IP20			

## LINEAR LUMINAIRES

### ▶ Integrated Fixture Series

Available in 2ft and 4ft. linkable lengths for installation lengths up to 8ft. of seamless illumination. Surface or suspended mounting.



Model:	2FT-10W	4FT-12W	4FT-15W	4FT-18W	4FT-22W	8FT-30W	8FT-40W
Part Number:	ZY-T8-10W 600 BINS	ZY-T8-12W 1200 BINS	ZY-T8-15W 1200 BINS	ZY-T8-18W 1200 BINS	ZY-T8-22W 1200 BINS	ZY-T8-30W 2400 BINS	ZY-T8-40W 2400 BINS
Length(Inch):	24	48	48	48	48	96	96
Rated Wattage(W):	10	12	15	18	22	30	40
Rated Lumen(Lm):	1,400	1,680	2,100	2,520	3,080	4,200	5,600
Voltage:	AC 100-277/100-347V						
CCT:	3,000/3,500/4,000/4,500/5,000K						
Compliance:	UL/cUL						
Beam Angle(Deg):	120						
CRI:	>80						
Protection Class:	IP54						

### ▶ Vapor Tight Series

The ZY-STP Vapor Tight series is IP65 rated for use in any commercial or industrial environment where dust, debris and water is present. This luminaire is compatible for integration with motion sensors and emergency battery backup. It can be surface mounted or suspended.



Model:	26in-48W	48in-24W	48in-50W	50in-24W	50in-35W	50in-48W
Part Number:	ZY-STP 8417-48W	ZY-STPA 124-24W	ZY-STPA 224-50W	ZY-STP 8132-24W	ZY-STP 8232-24W	ZY-STP 8232-48W
Length(Inch):	26.3	48.5	48.5	50	50	50
Rated Wattage(W):	48	24	50	24	35	48
Rated Lumen(Lm):	6,720	3,360	7,000	3,360	4,900	6,720
Voltage:	AC 100-277/100-347V					
CCT:	3,000/3,500/4,000/4,500/5,000K					
Compliance:	UL/cUL					
Beam Angle(Deg):	120					
CRI:	>80					
Protection Class:	IP65					

## LINEAR LUMINAIRES

### ▶ Refrigeration Luminaires Series

Designed for humid and wet refrigeration applications, these linear luminaires are ideal for retail display and NSF rated food processing applications. Available in 2ft / 4ft / 5ft / 6ft lengths as either Type B (line voltage direct) or Type C (external driver types).



Model:	2FT-8W	3FT-12W	4FT-12W	4FT-18W	5FT-20W	5FT-22W	6FT-22W	6FT-30W
Part Number:	ZY-8W 600	ZY-12W 900	ZY-12W 1200	ZY-18W 1200	ZY-20W 1500	ZY-22W 1500	ZY-22W 1800	ZY-30W 1800
Length(Inch):	24	36	48	48	60	60	72	72
Rated Wattage(W):	8	12	12	18	20	22	22	30
Rated Lumen(Lm):	1,120	1,680	1,680	2,520	2,800	3,080	3,080	4,200
Voltage:	AC 100-277/100-382V							
CCT:	3,000/3,500/4,000/4,500/5,000K							
CRI:	>80							
Compliance:	UL/cUL							

### ▶ Tri Proof Luminaire Series

The Tri Proof series is IP65 rated for use in any commercial or industrial environment where dust, vapor and water is present. This luminaire is compatible for integration with motion sensors and emergency battery backup. It is designed to be architecturally decorative in either surface mounted or suspended applications.



Model:	ZY-S4/ZY-S5
Rated Wattage(W):	80/100/150/200
Rated Lumen(Lm):	11,200/14,000/21,000/28,000
Length(Inch):	48.8×4×3.6/60×4×3.6
Voltage:	AC 100-277/100-347V
CCT:	3,000/3,500/4,000/4,500/5,000K
Dimming Option:	0-10VDC Standard
Beam Angle(Deg):	120
CRI:	>80
Protection Class:	IP65
Compliance:	UL/cUL

## RECESSED LED TROFFERS

### ▶ Wattage and CCT Tunable LED Troffer Series

DLC listed for rebates. 50,000+ Hour Lifetime. UL Classified. Anti-glare design. CCT adjustable. Suitable for damp locations. Minimizes replacements and maintenance costs. Easy installation and retrofit application. Available color temperatures 3500K, 4000K & 5000K. App or panel switch wireless control. The integrated sensor is both PIR motion sensor and light detective sensor. Emergency battery option available.



Model:	ZY-T4	ZY-T7
Part Number:	ZY-T4-15/25/36W XYZ	ZY-T7-25/36/50W XYZ
Width x Length(FT):	2x2	2x4
Rated Wattage(W):	15/25/36	25/36/50
Rated Lumen(Lm):	140	
Voltage Options:	AC 100-277/100-347V	
CCT Options:	3,000-5,000K	
Dimming:	0-10V	
Beam Angle(Deg):	80.7(Average)	
CRI:	≥80	
Warranty:	5 Years	
Compliance:	UL/cUL	

### ▶ Wattage and CCT Tunable Retrofit Kit Series

DLC listed for rebates. 50,000+ Hour Lifetime. UL Classified. Anti-glare design. CCT adjustable. Suitable for damp locations. Minimizes replacements and maintenance costs. Easy installation and retrofit application. Available color temperatures 3500K, 4000K & 5000K. App or panel switch wireless control. The integrated sensor is both PIR motion sensor and light detective sensor. Emergency battery option available.



Model:	ZY-R4	ZY-R7
Part Number:	ZY-R4-15/25/36W XYZ	ZY-R7-25/36/50W XYZ
Width x Length(FT):	2x2	2x4
Rated Wattage(W):	15/25/36	25/36/50
Rated Lumen(Lm):	140	
Voltage Options:	AC 100-277/100-347V	
CCT Options:	3,000-5,000K	
Dimming:	0-10V	
Beam Angle(Deg):	80.7(Average)	
CRI:	≥80	
Warranty:	5 Years	
Compliance:	UL/cUL	

## FLAT PANEL LUMINAIRE & RECESSED LED TROFFERS

### ▶ CCT and Power Adjustable Back-lit Panel

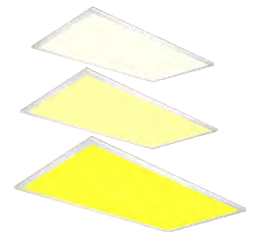
Lumen Output more than 125 Lm/W. 0-10V dimming function. Reduces energy consumption up to 60%. Operating temperature: -20°C to 50°C. Surface mounting installation. Suitable for damp location.



Product Number:	P1-20W	P1-30W	P1-40W	P4-20W	P4-30W	P4-40W	P7-40W	P7-50W	P7-60W
Power Consumption(W):	10/15/20	20/25/30	20/30/40	10/15/20	20/25/30	20/30/40	20/35/40	30/40/50	40/50/60
Dimensions:	1ft x 4ft			2ft x 2ft			2ft x 4ft		
CCT Option:	3,500/4,000/5,000K								
Maximum Luminous Flux(Lm):	2,200/2,500	3,300/3,750	4,400/5,000	2,200/2,500	3,300/3,750	4,400/5,000	4,400/5,000	5,500/6,250	6,600/7,500
Standard Version(Lm/W):	≥110								
Premium Version (Lm/W):	≥125								
Rated Power:	20/30/40W						40/50/60W		
Input Voltage:	100-277/120-347VAC								
Frequency:	50/60Hz								
Power Factor:	>0.9								
Beam Angle:	110°								
CRI:	≥80								

### ▶ Edge-lit Flat Panel Wattage and CCT Tunable Luminaires

The ZY-P CCT Selectable Panel series is ideal for recessed ceiling applications for retail, education, medical, offices and other areas where glare free and consistent general illumination is required. Selectable on-board dip switch settings at 3500K / 4000K / 5000K allow for on-site CCT color change.



Model:	ZY-P1-20W-LDS	ZY-P1-30W-LDS	ZY-P1-40W-LDS	ZY-P4-20W-LDS	ZY-P4-30W-LDS	ZY-P4-40W-LDS	ZY-P7-30W-NNS	ZY-P7-40W-NNS	ZY-P7-50W-NNS
WidthxLength(FT):	1x4			2x2			2x4		
Rated Wattage(W):	20	30	40	20	30	40	30	40	50
Rated Lumen(Lm):	2,600	3,900	5,200	2,600	3,900	5,200	3,900	5,200	6,500
Voltage:	AC 100-277/100-382V								
CCT:	User Selectable 3,500/4,000/5,000K								
Beam Angle(Deg):	120								
CRI:	>80								

## LINEAR LUMINAIRES

### ► Strip Light Series

The ZY-ST Strip Light series is ideal for retail, education, medical, offices and other areas where glare free and consistent general illumination is required. It is compatible for integration with motion sensors and emergency battery backup. It is designed to be architecturally decorative in either surface mounted or suspended applications.



Model:	ZY-ST 4FT24	ZY-ST 4FT40	ZY-ST 8FT48	ZY-ST 8FT56	ZY-ST 8FT60	ZY-ST 8FT68	ZY-ST 8FT80
Length(Inch):	48	48	96	96	96	96	96
Rated Wattage(W):	24	40	48	56	60	68	80
Rated Lumen(Lm):	3,360	5,600	6,720	7,840	8,400	9,520	11,200
Voltage:	AC 100-277V						
CCT:	3,000/3,500/4,000/4,500/5,000K						
Beam Angle(Deg):	120						
CRI:	>80						
Protection Class:	UL Damp Location						
Compliance:	UL/cUL						
Dimming:	0-10V DC Standard						

### ► Linear Magnetic Retrofit Kit Series

It provides for the fastest installation time of any LED retrofit solution. This UL Type C system installs into any type of fluorescent troffer system in minutes.



Model:	2FT10W	4FT10W	4FT12W	4FT15W	4FT20W
Part Number:	ZY-10W600 BONS	ZY-10W1200 BONS	ZY-12W1200 BONS	ZY-15W1200 BONS	ZY-20W1200 BONS
Strip Length(Inch):	24	48	48	48	48
Wattage(W)-Each Strip:	10	10	12	15	20
Lumen(Lm)-Each Strip:	1,400	1,400	1,680	2,100	2,800
Available Kits(Strip Qty):	1/2/3/4				
Driver Voltage:	AC 100-277V				
CCT Options:	3,000/3,500/4,000/4,500/5,000K				
Beam Angle(Deg):	120				
CRI:	>80				
Protection Class:	UL Damp Location				
Compliance:	UL/cUL				

## COMMERCIAL GRADE LUMINAIRES

### ► Decorative Suspended Food Series

The Decorative Suspended Food Series is a commercial grade solution where decorative general illumination is required.



Model:	FX-HBPH
Rated Wattage(W):	50/80/100/120/150
Rated Lumen(Lm):	7,000/11,200/14,000/16,800/21,000
Voltage Options:	AC 100-277V
CCT Options:	3,000/3,500/4,000/4,500/5,000K
Dimming:	0-10VDC Standard
Beam Angle(Deg):	45/90
CRI:	>80
Compliance:	UL/cUL



EXTERIOR WALL MOUNT LUMINAIRES



EXTERIOR LUMINAIRES

- ▶ Venas exterior luminaires are designed to provide both the efficiency and maintenance free operation of LED with the form factors and features that designers, engineers and architects require for a full range of applications. These luminaires are ideal for commercial, industrial, government, institutional and municipal applications.
- ▶ Global, national and regional compliance to all the most recent standards for safety, performance and application efficacy.
- ▶ Global production capacities with regionalized warehousing to fulfill project requirements of any scale.
- ▶ Constant design and performance updates responding to real world demands for the newest features in all market segments.
- ▶ With millions of units manufactured and installed, Venas products demonstrate a product reliability rate second to none in the lighting industry.

Flush Mount Canopy Series



The ZY-SCP series is designed for typical use in gas station and other retail canopies and architectural overhang applications for high level illumination.



Model:	CP-100W AN50D120	CP-120W AN50D120	CP-150W AN50D120
Rated Wattage(W):	100	120	150
Rated Lumen (Lm):	13000	15600	19500
Voltage Options:	AC100-277V/100-347V/200-480V		
CCT Options:	3,000/3,500/4,000/4,500/5,000K		
Beam Angle(Deg):	120		
CRI:	>80		
Protection Class:	IP65		
Compliance:	UL/cUL		

Surface Mount Canopy Series



It is an economical, all weather surface mount luminaire for general flood illumination in commercial and industrial applications.



Model:	CP-55W BN50D120	CP-70W BN50D120
Rated Wattage(W):	55	70
Rated Lumen (Lm):	7150	9100
Voltage Options:	AC100-277V/100-347V/200-480V	
CCT Options:	3,000/3,500/4,000/4,500/5,000K	
Beam Angle(Deg):	120	
CRI:	>80	
Protection Class:	IP65	
Compliance:	UL/cUL	

## EXTERIOR AREA LIGHTING LUMINAIRES

### ► Shoebox A Series



The Shoebox A Series is a high efficacy luminaire that is ideal for all weather pole mount street and parking lot applications.



Model:	SB-80W A1NZ	SB-100W A1NZ	SB-150W A2NZ	SB-200W A2NZ	SB-300W A3NZ
Rated Wattage(W):	80	100	150	200	300
Rated Lumen(Lm):	11,200/13,600	14,000/17,000	21,000/25,500	28,000/34,000	42,000/51,000
Voltage Options:	AC100-277V/100-347V/200-480V				
CCT Options:	4,000/5,000K				
Optics(IES Type):	Type 3/4/5				
CRI:	>70				
Control:	Photocell Sensor and Motion Sensor				
Protection Class:	IP65				
Mounting:	Arm Mounting and Slip Fitter Mounting				
Compliance:	UL/cUL				

### ► Shoebox F Series



Die-cast aluminum body and frame-corrosion resistant. Easy installation and maintenance. Extra photocell sensor available. Motion sensor and daylight sensor. Color changeable and power adjustable.



Model:	SB-100W F1NxxD120	SB-100W F1NxxD347	SB-150W F3NxxD120	SB-150W F3NxxD347	SB-200W F3NxxD120	SB-200W F3NxxD347	SB-300W F1NxxD120	SB-300W F1NxxD347
Rated Wattage(W):	100	100	150	150	200	200	300	300
Efficiency:	140/170 lm/W							
Voltage Options:	AC100-277V/100-347V/200-480V							
CCT Options:	2,700-6,500K							
Optics(IES Type):	T2/T3/T4							
CRI:	70/80							
Power Frequency:	50/60Hz							
Power Factor:	0.95							
Protection Class:	Wet Location and IP65							
Working Lifespan:	>50,000H							
Compliance:	ETL/DLC/ENEC/CB/SAA/CE/EMC/ROHS/ERP							

## EXTERIOR AREA LIGHTING LUMINAIRES

### ► Street Light E Series



The Street Light E series is designed for intelligent control using both PIR and photo sensor technology. It is ideal for all weather pole mount street and parking lot applications.



Model:	EX-25W NYZD	EX-35W NYZD	EX-40W NYZD	EX-50W NYZD
Rated Wattage(W):	25	35	40	50
Rated Lumen(Lm):	3,500/4,250	4,900/5,950	5,600/6,800	7,000/8,500
Voltage Options:	AC100-277V/100-347V/200-480V			
CCT Options:	4,000/4,500/5,000K			
Optics(IES Type):	Type 3/4/5			
CRI:	>70			
Control:	PIR/Photo Sensor			
Mounting:	Arm Mounting and Slip Fitter Mounting			
US Compliance:	UL/cUL			

### ► LED Street Light STEU-A Series



Lumen output up to 140/170 lumens per watt. Reduces energy consumption up to 60%. Surface mounting installation. Suitable for wet location(IP65). Photocell sensor, motion sensor and 6-20KV surge options.



Model:	STEU-50W A1xyz	STEU-80/100W A2xyz	STEU-100/120/150W A3xyz	STEU240W A4xyz
Rated Wattage(W):	50	80/100	100/120/150	150/200/240
Rated Lumen(Lm):	7,000/8,500	11,200/13,600 ; 14,000/17,000	14,000/17,000; 16,800/20,400 ; 21,000/25,500	21,000/25,500; 28,000/34,000; 33,600/40,800
Voltage Options:	AC 100-250V			
CCT Options:	3,000-5,700K			
Frequency:	50/60Hz			
CRI:	70			
Power Factor:	>0.9			
Protection Class:	IP65			
Operating Temperature:	-40°C to +45°C			
Compliance:	ENEC/CB/SAA/CE/EMC/ROHS/ERP			

## EXTERIOR AREA LIGHTING LUMINAIRES



### ► Street Light H Series

Lumen output up to 150/170 lumens per watt. Reduces energy consumption up to 60%. Easy installation. Protection degree is Ip65. It is ideal for various outdoor areas to bring outstanding lighting.



Model:	ST-H 20-60WUXYZ	ST-H 80/100/120/150WUXYZ	ST-H 180/200/220WUXYZ
Rated Wattage(W):	20-60	80/100/120/150	180/200/220
Rated Lumen(Lm):	3,000-9,000;3,400-10,200	12,000/14,000/18,000/22,500	27,000/30,000/33,000
Voltage Options:	120-277/277-480V		
CCT Options:	3,000/4,000/5,000/6,000K		
Beam Angle:	T3-M		
CRI:	AC100-277V/100-347V/200-480V		
Protection Class:	IP65		
Operating Temperature:	-40°C to +50°C		
Compliance:	ENEC/CB/SAA/CE/EMC/ROHS/ERP		



### ► LED Street Light I Series

With highly efficient, low energy-consumption street light, I series bring to you convenience and safety at outdoor areas. Technology innovations are made to ensure that the light can withstand tough environments, and to reduce the maintenance cost to the minimum.

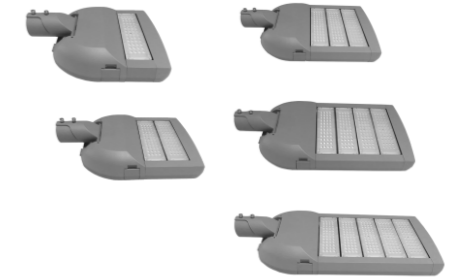


Model:	ST-xxWI1	ST-xxWI2	ST-xxWI3	ST-xxWI4	ST-xxWI5
Rated Wattage(W):	50	80/100	150	200/250	300
Beam Angle:	T2M/T3M/T4M				
Voltage Options:	AC110-277V				
CCT Options:	2700-6500K				
Efficiency:	130 lm/W; 150 lm/W				
CRI:	> 70				
Power Factor:	≥0.95				
Protection Class:	IP66				
Operating Temperature:	-40°C (-40°F) - +50°C (122°F)				
Compliance:	ENEC/CB/SAA/CE/EMC/ROHS/ERP				

## EXTERIOR AREA LIGHTING LUMINAIRES

### ► Street Light J Series

J series produce ideal light distribution with the highest reliability level-incredibly high over 93% total efficiency, while saving up to 80% energy compared with traditional lighting. With die-cast aluminum(AL1070)housing, rugged and weather-tight design, this durable luminaire can withstand the most demanding elements.



Model:	ST-xxxW J1	ST-xxxW J2	ST-xxxW J3	ST-xxxW J4	ST-xxxW J5
Rated Wattage(W):	50	80/10/120	100/150/180	100/150/200/250	150/200/250/280/300
Efficiency:	130 lm/W, 150 lm/W				
Voltage Options:	AC110-277V				
CCT Options:	2700K-6500K				
Power Factor:	≥0.95				
CRI:	> 70				
Operating Temperature:	-40°C (-40°F) - +50°C (122°F)				
Beam Angle:	T2M/T3M/T4M				
Compliance:	ENEC/CB/SAA/CE/EMC/ROHS/ERP				



### ► Street Light L Series

L series produce ideal light distribution with the highest reliability level-incredibly high over 93% total efficiency, while saving up to 80% energy compared with traditional lighting. With die-cast aluminum housing, rugged and weather-tight design, this durable luminaire can withstand the most demanding elements.



Model:	ST-50W L1	ST-100W L1	ST-150W L2	ST-200W L2	ST-240W L2
Rated Wattage(W):	50	100	150	200	240
Rated Lumen(Lm):	7,500	15,000	22,500	30,000	36,000
Voltage Options:	AC110-277V				
CCT Options:	3,000-6,500K				
Efficiency:	150 lm/W				
CRI:	> 70				
Power Factor:	≥0.9				
Beam Angle:	120°				
Operating Temperature:	-40°C (-40°F) - +50°C (122°F)				
Compliance:	ENEC/CB/SAA/CE/EMC/ROHS/ERP				

## EXTERIOR AREA LIGHTING LUMINAIRES

## EXTERIOR AREA LIGHTING LUMINAIRES

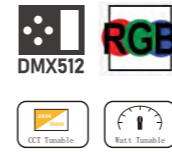


### ▶ LED Sports Light J/L Series

Extremely long life-span. Low working wattage for energy saving. High lumen efficiency and high CRI. High vibration and impact resistant. Friendly to environment without mercury. Easy and secure installation. Uniformity lighting distribution. 3-5 years warranty. Listed on ETL.



Model:	J1	J2	L2
Rated Wattage(W):	400/500/600	700/800/900/1000	1200/1300/1400/1500
Rated Lumen(LM):	52,000/65,000/78,000/ 60,000/75,000/90,000	91,000/104,000/117,000/130,000 105,000/120,000/135,000/150,000	156,000/169,000/182,000/195,000 180,000/195,000/210,000/225,000
Voltage Options:	AC100-277V/100-347V/200-480V		
CCT Options:	2,700-6,500K		
Beam Angle(Deg):	15°/30°/45°/60°	15°/30°/45°/60°	15°/30°/45°
CRI:	RA70/RA80(Optional)/RA90(Optional)		
Protection Class:	Wet Location IP66		
Ambient Temperature:	-40°C to +50°C		
Mounting:	Bracket Mounting		
Compliance:	ENEC, CB, CE, SAA, ETL, ROHS, ERP, DLC		



### ▶ LED Flood Light N Series

N series produce ideal light distribution with the highest reliability level-incredibly high over 93% total efficiency. With die-cast aluminum(ADC12)housing, rugged and weather-tight design, this durable luminaire can withstand the most demanding elements.



Model:	SP-N1xxxW	SP-N2xxxW	SP-N3xxxW	SP-N4xxxW	SP-N5xxxW
Rated Wattage(W):	250/300/400	400/500/600/800	700/750/800/900/1200	1000/1100/1200/1600	1250/1400/1500/2000
Beam Angle:	15°/45°/60°/90°/120°/T30x90/T3VS/T2VS				
Voltage Options:	AC100-277V/100-347V/200-480V				
CCT Options:	4000K/5000K/6500K				
Efficiency:	130 lm/W, 150 lm/W				
CRI:	70/80				
Power Factor:	0.95				
IK Rating:	IK08				
Operating Temperature:	-40°C(-40°F)-+50°C(122°F)				
Compliance:	ENEC, CB, CE, SAA, ROHS, ERP, EMI				

### ▶ LED Sports Light M Series



Extremely long life-span. High durability and reliability. Low working wattage for energy saving. Good heat dissipation. High vibration and impact resistant. Friendly to environment without mercury. Easy and secure installation. Ideal for harsh environment. Uniformity lighting distribution. Listed on ETL.



Model:	M1	M2	M3	M4
Rated Wattage(W):	400/500/600	800/1000/1200	1500/1800	2000/2400
Rated Lumen(Lm):	52,000/65,000/78,000/ 60,000/75,000/90,000	104,000/130,000/156,000/ 120,000/150,000/180,000	195,000/234,000/ 225,000/270,000	260,000/312,000/ 300,000/360,000
Light Efficiency:	130/150 lm/W			
Voltage Options:	AC100-277V/100-347V/200-480V			
CCT Options:	2,700-6,500K			
Beam Angle(Deg):	15°/30°/45°/60°/120°			
CRI:	70/80			
Power Factor:	0.95			
Protection Class:	IP66			
Compliance:	ENEC, CB, CE, SAA, ETL, ROHS, DLC			



### ▶ LED Flood Light Q Series

Q series produce ideal light distribution with the highest reliability level-incredibly high over 93% total efficiency. With die-cast aluminum(ADC12)housing, rugged and weather-tight design, this durable luminaire can withstand the most demanding elements.



Model:	SP-Q2xxxW UXYZ	SP-Q3xxxW UXYZ	SP-Q4xxxW UXYZ
Rated Wattage(W):	400/500/600/800	700/750/800/900/1200	1000/1100/1200/1600
Power Factor:	0.95		
Voltage Options:	AC100-277V/100-347V/200-480V		
CCT Options:	4,000K/5,000K/6,500K		
IK Rating:	IK08		
CRI:	70/80		
Light Efficiency( lm/W):	130 lm/W, 150 lm/W		
Working Temperature:	-40°C(-40°F)-+50°C(122°F)		
Beam Angle:	15°/45°/60°/90°/120°/T30x90/T3VS/T2VS		
US Compliance:	ENEC, CB, CE, SAA, ROHS, ERP, EMI		

## EXTERIOR AREA LIGHTING LUMINAIRES

### ► Flood Light R Series

R series produce ideal light distribution with the highest reliability level-incredibly high over 93% total efficiency. With die-cast aluminum(ADC12)housing, rugged and weather-tight design, this durable luminaire can withstand the most demanding elements.



Model:	FL-R1xxW UXYZ	FL-R2xxW UXYZ	FL-R3xxW UXYZ	FL-R4xxW UXYZ
Rated Wattage(W):	30/40/50	60/80/100	100/120/150	100/150/180/200
Rated Lumen(lm):	4,500/6,000/7,500	9,000/12,000/15,000	15,000/18,000/22,500	15,000/22,500/27,000/30,000
Voltage Options:	AC 120-277V/AC120-347V/277-480V			
CCT Options:	2,200K/2,700K/3,000K/4,000K/5,000K/5,700K/6,500K			
Light Efficiency( lm/W):	150			
Working Temperature:	-40°C (-40°F )-+50°C (122°F )			
Beam Angle:	120°/T3M			
US Compliance:	ETL,DLC			

### ► Flood Light D Series

The Flood Lighting Series is an economical solution for interior or exterior-all weather general illumination applications.



Model:	FL-D1 20W/30W WXYZ	FL-D2 50W WXYZ	FL-D3 80W WXYZ	FL-D4 100W WXYZ	FL-D5 150W WXYZ	FL-D6 200/240W WXYZ	FL-D7 300/350W/400W WXYZ
Rated Wattage(W):	20/30	50	80	100	150	200/240	300/350/400
Rated Lumen(Lm):	2600/3900/ 3200/4800	6500/ 8000	10,400/ 12,800	13,000/ 16,000	19,500/ 24,000	26,000/31,200/ 26,000/38,400	39,000/45,500/52,000 48,000/56,000/64,000
Voltage Options:	AC100-277V/100-347V/200-480V						
CCT Options:	3,000-6,000K						
Beam Angle(Deg):	30/45/60/90/120/T30x90/T3VS/T2VS						
CRI:	70						
PF:	≥0.9						
Compliance:	ENEC/CB/CE//SAA/ROHS						

## EXTERIOR AREA LIGHTING LUMINAIRES

### ► LED Tunnel Light D Series

Adapted to a wide range of different tunnel applications to provide safety at all times. High level of protection against corrosion, impact, water, and dust. Adjustable mounting bracket for application flexibility. A movable door to simplify and expedite installation. Ergonomic light distribution to achieve even illuminating effect.



Model:	U-D1xxW	U-D2xxW	U-D3xxW	U-D4xxW
Rated Wattage(W):	30/50	80/100	120/150	180/200/240
Rated Lumen(Lm):	3900/6500	10400/13000	15600/19500/26400	26000/31200
Voltage Options:	AC100-277V/100-347V/200-480V			
CCT Options:	3000-6500K			
Beam Angle(Deg):	15°/30°/60°/90°/120°/T2M/T3M/T4M			
CRI:	70			
Protection Class:	IP66			
Ambient Temperature:	-40°C (-40°F )-+50°C (122°F )			
Mounting:	Bracket Mounting			
Compliance:	ENEC/CB/CE/EMC/SAA			

## EXTERIOR STREET & SPOT LUMINAIRES

### ▶ Wall Pack LED Light Series



The LED wall pack offers maximum light output for general purpose area and security lighting through a classic glass refractor design.



Model:	WP40W I1XYZ	WP60W I1XYZ	WP80W I2XYZ	WP100W I2XYZ	WP120W I3XYZ	WP40W I1XYZI	WP60W I1XYZI	WP80W I2XYZI	WP100W I2XYZI	WP120W I3XYZI
Rated Wattage(W):	40	60	80	100	120	40	60	80	100	120
Rated Lumen(Lm):	5,600/ 6,800	8,400/ 10,200	11,200/ 13,600	14,000/ 17,000	16,800/ 20,400	5,600/ 6,800	8,400/ 10,200	11,200/ 13,600	14,000/ 17,000	16,800/ 20,400
Voltage Options:	AC 100-277/347-480V					AC 100-277V				
CCT Options:	2,700/3,000/4,000/5,000/5,700/6,500K									
PF:	>0.9									
CRI:	>70									
Light Efficiency( lm/W):	140/170									
Protection Class:	IP65									
Mounting:	Junction Box Mounting									
US Compliance:	ETL, CETL, FCC, DLC									

### ▶ Garden Bollard Light Series



The garden bollard light series is designed for residential, institutional and municipal exterior applications. The range of lumen output is ideal for decorative to high lumen general area lighting applications.



Model:	BB-LD-30W-AR-B (-A/-B/-C)	BB-LD-50W-AR-B (-A/-B/-C)	BB-LD-75W-AR-B (-A/-B/-C)	BB-LD-100W-AR-B (-A/-B/-C)
Rated Wattage(W):	30W	50W	75W	100W
Rated Lumen(Lm):	3,900/6,500/9,750/13,000			
Voltage Options:	AC 100-277/277-480V			
CCT Options:	3,000/3,500/4,000/5,000K			
Beam Angle(Deg):	120			
CRI:	>70			
Protection Class:	IP67			
Compliance:	UL/cUL			



## HORTICULTURAL LUMINAIRES

▶ The VENAS Horticultural Grow Light series provides a wide range of specialized spectral luminaires designed for a variety of plant growth and location conditions. The Horticultural series draws from years of research and technical expertise of professional horticulturists and plant specialists. As with all Venas products, the in-house testing facilities, high capacity manufacturing and quality assurance systems meet the demands of both small and large plant growers in the whole world.

- ▶ Smart Control and Step Dimming are available.
- ▶ All types of hydroponics, horticulture and agriculture purpose including Cannabis growing option.
- ▶ Application Locations including but not limited to farm, exhibition, garden, home, urban, bonsai, green house and university lab.
- ▶ Excellent heat dissipation and high quality LED.

## HORTICULTURAL LUMINAIRES

### ▶ Linear Grow Light Series

The Linear Grow Light series is an economical solution for general types of plant growth. It is linkable for up to 24ft/200W continuous length. Optimal mounting height is 0.4-2.5m above plants. Photonic efficacy is 1.6-2.05  $\mu\text{mol/s/W}$ .



Model:	ZY-T8-10W600	ZY-T8-15W900	ZY-T8-20W1200	ZY-T8-25W1200	ZY-T8-30W1500	ZY-T8-35W1500	ZY-T8-40W1800
Rated Wattage(W):	10	15	20	25	30	35	40
PAR@0.3m:	85	89	98	104	116	124	156
Dimension(Inch):	24	36	48	48	60	60	72
Max Connection Qty:	6	6	6	4	4	4	4
Spectral Ratios(Red:Blue):	5:1/3:1						
Voltage Options:	AC 100-277V						
Beam Angle(Deg):	120						
Protection Class:	IP40						
Compliance:	UL/cUL/CE/RoHS						
PPE	2.9 $\mu\text{mol/J}$						

### ▶ LED Grow Light P Series

Available in various light spectra for the most optimal light uniformity for every type of plants and growing stages. It emits ideal mixes of red, blue and far red light wavelengths in the proper intensities for different growth stages, making it the best solution for virtually any horticultural controlled environment.



Model	GL-P640W-XYZ	GL-P720W-XYZ	GL-P800W-XYZ
Wattage	640W	720W	800W
Input Voltage	100-277 / 277-480 VAC		
PPE	2.9 $\mu\text{mol/J}$		
PPF	2,320 $\mu\text{mol/s}$		
CRI	>70		
Net Weight	15KG		
Dimension	28.74×11.81×3.94"		
Compliance:	ETL/DLC		

## HORTICULTURAL LUMINAIRES

### ▶ LED Grow Light B Series



Available in various light spectra for the most optimal light uniformity for every type of plants and growing stages. It emits ideal mixes of red, blue and far red light wavelengths in the proper intensities for different growth stages, making it the best solution for virtually any horticultural controlled environment.



Model	GL-B320W-XYZ	GL-B640W-XYZ
Wattage	320W	640W
Input Voltage	100-277 VAC	
PPE	2.9 $\mu\text{mol/J}$	
PPF	928 $\mu\text{mol/s}$	1,972 $\mu\text{mol/s}$
CRI	>70	
Net Weight	6.5KG	13.5KG
Dimension	24.1×4.7×3.1"	42.5×4.7×3.1"
Compliance:	ETL/DLC	

### ▶ LED Plant Fixture Z Series

The permutation series is a unique modular bar design for enhanced thermal management and output level selection. Optimal mounting height is 6-12"(15.2-30.5cm) above canopy.



Model:	GL-Z1 320W XYZ	GL-Z2 640W XYZ	GL-Z3 800W XYZ	GL-Z4 960W XYZ	GL-Z5 1200W XYZ
Rated Wattage(W):	320	640	800	960	1,200
THD:	<15%				
Spectrum:	PhysioSpec Indoor™/PhysioSpec Greenhouse™				
Voltage:	AC 120-277V, 50/60Hz				
Efficacy:	2.9 $\mu\text{mol/J}$				
Ambient Temperature:	-30°C to +35°C				
Light Output PPF:	928 $\mu\text{mol/s}$	1,856 $\mu\text{mol/s}$	2,320 $\mu\text{mol/s}$	2,496 $\mu\text{mol/s}$	3,120 $\mu\text{mol/s}$
Compliance:	ETL/DLC				