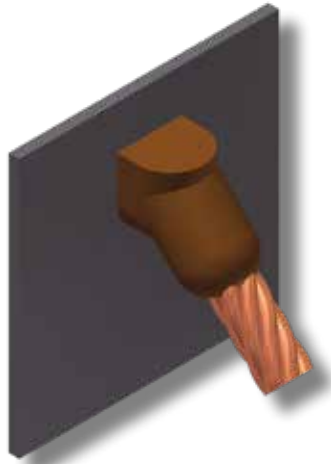


CS-3

TYPE MOLDS

*Angular Cable Drop to Vertical Steel Surface
For AWG Conductors*



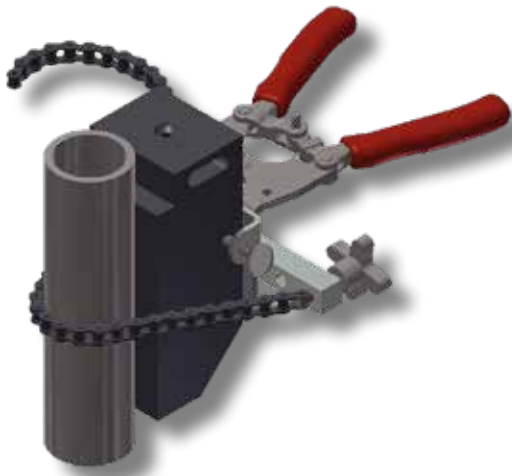
MOLDS FOR AWG CONDUCTORS										
Cable Size	STANDARD CONNECTION					HEAVY DUTY CONNECTION				
	Mold #	Price Key	Weld Metal	Handle Clamps	Lead Time	Mold #	Price Key	Weld Metal	Handle Clamps	Lead Time
#6	M-585	4	45	B-106	2	M-585-H	4	65	B-106	2
#4	M-586	4	45	B-106	2	M-586-H	4	65	B-106	2
#2	M-588	4	45	B-106	SDS	M-588-H	4	90	B-106	2
#1	M-589	4	65	B-106	2	M-589-H	4	115	B-106	2
1/0	M-590	4	90	B-106	SDS	M-590-H	4	150	B-106	2
2/0	M-591	4	90	B-106	SDS	M-591-H	4	150	B-106	2
3/0	M-592	4	115	B-106	2	M-592-H	4	200	B-106	4
4/0	M-593	4	115	B-106	SDS	M-593-H	4	200	B-106	2
250 MCM	M-594	4	115	B-106	2	M-594-H	4	200	B-106	2
300 MCM	M-595	4	150	B-106	2	M-595-H	4	250	B-106	4
350 MCM	M-596	4	200	B-106	2	M-596-H	4	250	B-106	4
500 MCM	M-598	4	200	B-106	2	M-598-H	5	2-150	B-107	2
750 MCM	M-599	5	2-150	B-107	2	M-599-H	5	500	B-107	4
1000 MCM	M-600	5	2-200	B-107	2	M-600-H	5	3-200	B-107	4

- For sizes not listed, contact thermOweld®.
- Molds listed are for concentric stranded cable. Add suffix "-S" to mold number for solid conductors.
- For molds with wear plates, see page 135.
- For expedited service, contact thermOweld®.
- To order weld metal for use with EZ Lite Remote® insert TW before and EZ after weld metal number.
- Required Tools;
 - Handle Clamps w/ Flint Ignitor (see chart for correct handles)
 - 38-0309-00 ~ Flint Ignitor or 38-EZLT-RU EZ Lite Remote®
- Other recommended accessories;
 - 40-0106-32 ~ Vertical Chain Clamp w/ B-106 Handles
 - 40-0107-32 ~ Vertical Chain Clamp w/ B-107 Handles
 - 40-4431-00 ~ Magnetic Handle Clamp w/ B-106 Handles
 - 38-3922-00 ~ Mold Cleaning Brush
 - 38-0135-00 ~ Cable Cleaning Brush
 - 38-0101-00 ~ Rasp

CS-3

TYPE MOLDS

Angular Cable Drop to Vertical Steel Pipe
For AWG Conductors



Use 40-0106-32 Vertical Chain Clamps to help hold mold to pipe

Section 2 - Molds
AWG Conductors

MOLDS FOR AWG CONDUCTORS

Cable Size	Pipe Size	Mold #	Price Key	Weld Metal	Handle Clamps	Lead Time
#4	1 1/4" to 4"	M-2476	4	45	B-106	2
	4" to 6"	M-2477	4	45	B-106	2
	6" to 10"	M-2478	4	45	B-106	2
	12" & up	M-586 ‡	4	45	B-106	2
#2 Sol	1 1/4" to 4"	M-9233-S	4	45	B-106	SDS
	4" to 6"	M-2480-S	4	45	B-106	2
	6" to 10"	M-2583-S	4	45	B-106	2
	12" & up	M-588-S ‡	4	45	B-106	SDS
#2	1 1/4" to 4"	M-9233	4	45	B-106	SDS
	4" to 6"	M-2480	4	45	B-106	2
	6" to 10"	M-2583	4	45	B-106	2
	12" & up	M-588 ‡	4	45	B-106	SDS
#1	1 1/4" to 4"	M-2482	4	65	B-106	2
	4" to 6"	M-2483	4	65	B-106	2
	6" to 10"	M-2484	4	65	B-106	2
	12" & up	M-589 ‡	4	65	B-106	2
1/0	1 1/4" to 4"	M-2486	4	90	B-106	2
	4" to 6"	M-2487	4	90	B-106	2
	6" to 10"	M-2488	4	90	B-106	2
	12" & up	M-590 ‡	4	90	B-106	SDS
2/0	1 1/4" to 4"	M-8833	4	90	B-106	SDS
	4" to 6"	M-2490	4	90	B-106	2
	6" to 10"	M-2491	4	90	B-106	2
	12" & up	M-591 ‡	4	90	B-106	SDS
3/0	1 1/4" to 4"	M-2493	4	115	B-106	2
	4" to 6"	M-2494	4	115	B-106	2
	6" to 10"	M-2495	4	115	B-106	2
	12" & up	M-592 ‡	4	115	B-106	2
4/0	1 1/4" to 4"	M-9021	4	115	B-106	SDS
	4" to 6"	M-2497	4	115	B-106	2
	6" to 10"	M-2498	4	115	B-106	2
	12" & up	M-593 ‡	4	115	B-106	SDS

- For sizes not listed, contact thermOweld®.
 - Molds listed are for concentric stranded cable. Add suffix "-S" to mold number for solid conductors.
 - For molds with wear plates, see page 135.
 - For expedited service, contact thermOweld®.
 - To order weld metal for use with EZ Lite Remote® insert TW before and EZ after weld metal number.
 - Required Tools;
 - Handle Clamps w/ Flint Ignitor (see chart for correct handles) 38-0309-00 ~ Flint Ignitor or 38-EZLT-RU EZ Lite Remote®
 - Other recommended accessories;
 - 40-0106-32 ~ Vertical Chain Clamp w/ B-106 Handles for 4" Pipe & smaller
 - 40-0106-27 ~ 20" Chain Extension for 4" to 10" Pipe
 - Use (2) 20" Chain Extensions for pipe sizes between 10" and 16"
 - 40-4431-00 ~ Magnetic Handle Clamp w/ B-106 Handles
 - 38-3922-00 ~ Mold Cleaning Brush
 - 38-0135-00 ~ Cable Cleaning Brush
 - 38-0101-00 ~ Rasp
- ‡ Flat Surface Mold