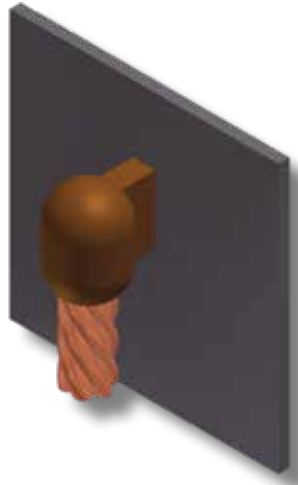


CS-23

TYPE MOLDS

Vertical Cable Drop to Vertical Steel Surface
For AWG Conductors

Note that the cable is **OFF** the surface



MOLDS FOR AWG CONDUCTORS										
Cable Size	STANDARD CONNECTION					HEAVY DUTY CONNECTION				
	Mold #	Price Key	Weld Metal	Handle Clamps	Lead Time	Mold #	Price Key	Weld Metal	Handle Clamps	Lead Time
#6	M-5389	4	45	B-106	2	M-5389-H	4	90	B-106	4
#4	M-5359	4	65	B-106	2	M-5359-H	4	115	B-106	2
#2	M-2781	4	65	B-106	2	M-2781-H	4	115	B-106	2
#2 Sol	M-2781-S	4	65	B-106	SDS	M-2781-HS	4	115	B-106	2
#1	M-5361	4	90	B-106	4	M-5361-H	4	150	B-106	4
1/0	M-2189	4	115	B-106	2	M-2189-H	4	200	B-106	2
2/0	M-2540	4	115	B-106	SDS	M-2540-H	4	200	B-106	2
3/0	M-5362	4	150	B-106	2	M-5362-H	4	250	B-106	2
4/0	M-8718	4	150	B-106	SDS	M-8718-H	4	250	B-106	2
250 MCM	M-8165	4	200	B-106	2	M-8165-H	17	2-150	B-106	4
300 MCM	M-5363	4	200	B-106	2	M-5363-H	17	2-150	B-106	2
350 MCM	M-9029	4	250	B-106	2	M-9029-H	5	2-200	B-107	4
500 MCM	M-8512	17	2-150	B-106	2	M-8512-H	6	500	B-107	2

- For sizes not listed, contact thermOweld®.
- Molds listed are for concentric stranded cable. Add suffix "-S" to mold number for solid conductors.
- For expedited service, contact thermOweld®.
- To order weld metal for use with EZ Lite Remote® insert TW before and EZ after weld metal number.
- Required Tools;
 - Handle Clamps w/ Flint Ignitor (see chart for correct handles)
 - 38-0309-00 ~ Flint Ignitor or 38-EZLT-RU EZ Lite Remote®
- Other recommended accessories;
 - 40-0106-32 ~ Vertical Chain Clamp w/ B-106 Handles for 4" Pipe & smaller
 - 40-0106-27 ~ 20" Chain Extension for 4" to 10" Pipe
 - Use (2) 20" Chain Extensions for pipe sizes between 10" and 16"
 - 40-4431-00 ~ Magnetic Handle Clamp w/ B-106 Handles
 - 38-3922-00 ~ Mold Cleaning Brush
 - 38-0135-00 ~ Cable Cleaning Brush
 - 38-0101-00 ~ Rasp

CS-23

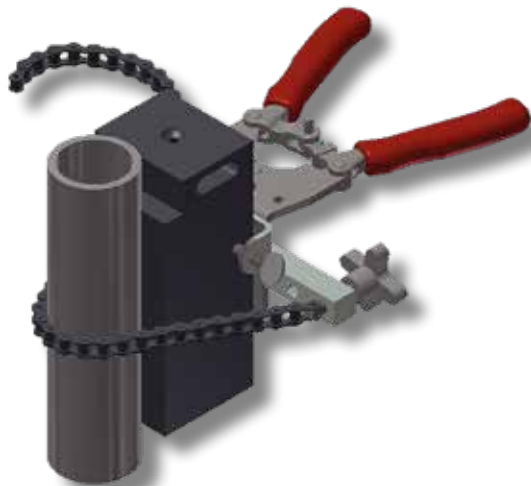
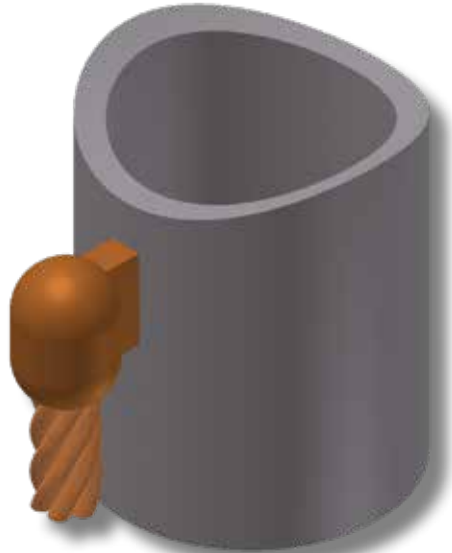
TYPE MOLDS

Vertical Cable Drop to Vertical Steel Pipe

For AWG Conductors

Note that the cable is **OFF** the surface

Section 2 - Molds
AWG Conductors



Use 40-0106-32 Vertical Chain Clamps to help hold mold to pipe

MOLDS FOR AWG CONDUCTORS						
Cable Size	Pipe Size	Mold #	Price Key	Weld Metal	Handle Clamps	Lead Time
#4	1 1/4" to 4"	M-8591	4	65	B-106	2
	4" to 6"	M-10521	4	65	B-106	4
	6" to 10"	M-10523	4	65	B-106	4
	12" & up	M-10524 ‡	4	65	B-106	4
#2 Sol	1 1/4" to 4"	M-6199-S	4	65	B-106	SDS
	4" to 6"	M-10528-S	4	65	B-106	4
	6" to 10"	M-10529-S	4	65	B-106	4
	12" & up	M-10530-S ‡	4	65	B-106	4
#2	1 1/4" to 4"	M-6199	4	65	B-106	4
	4" to 6"	M-10528	4	65	B-106	4
	6" to 10"	M-10529	4	65	B-106	2
	12" & up	M-10530 ‡	4	65	B-106	2
#1	1 1/4" to 4"	M-10531	4	90	B-106	2
	4" to 6"	M-10532	4	90	B-106	4
	6" to 10"	M-10533	4	90	B-106	4
	12" & up	M-10534 ‡	4	90	B-106	4
1/0	1 1/4" to 4"	M-10535	4	115	B-106	2
	4" to 6"	M-1147	4	115	B-106	4
	6" to 10"	M-10536	4	115	B-106	2
	12" & up	M-10537 ‡	4	115	B-106	4
2/0	1 1/4" to 4"	M-10538	4	115	B-106	2
	4" to 6"	M-10539	4	115	B-106	4
	6" to 10"	M-10540	4	115	B-106	4
	12" & up	M-10541 ‡	4	115	B-106	4
4/0	1 1/4" to 4"	M-5622	4	150	B-106	2
	4" to 6"	M-7381	4	150	B-106	2
	6" to 10"	M-10365	4	150	B-106	2
	12" & up	M-10542 ‡	4	150	B-106	4

- For sizes not listed, contact thermOweld®.
 - Molds listed are for concentric stranded cable. Add suffix "-S" to mold number for solid conductors.
 - For expedited service, contact thermOweld®.
 - To order weld metal for use with EZ Lite Remote® insert TW before and EZ after weld metal number.
 - Required Tools;
 - Handle Clamps w/ Flint Ignitor (see chart for correct handles) 38-0309-00 ~ Flint Ignitor or 38-EZLT-RU EZ Lite Remote®
 - Other recommended accessories;
 - 40-0106-32 ~ Vertical Chain Clamp w/ B-106 Handles for 4" Pipe & smaller
 - 40-0106-27 ~ 20" Chain Extension for 4" to 10" Pipe
 - Use (2) 20" Chain Extensions for pipe sizes between 10" and 16"
 - 40-4431-00 ~ Magnetic Handle Clamp w/ B-106 Handles
 - 38-3922-00 ~ Mold Cleaning Brush
 - 38-0135-00 ~ Cable Cleaning Brush
 - 38-0101-00 ~ Rasp
- ‡ Flat Surface Mold