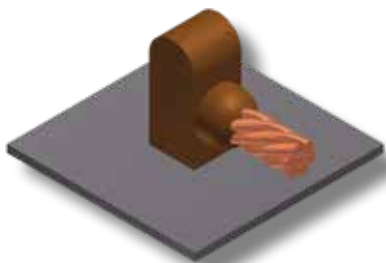


# CS-1

## TYPE MOLDS

**Horizontal Cable to Horizontal Steel Surface  
For AWG Conductors**

Note that the cable is **OFF** the surface



MOLDS FOR AWG CONDUCTORS										
Cable Size	STANDARD CONNECTION					HEAVY DUTY CONNECTION				
	Mold #	Price Key	Weld Metal	Handle Clamps	Lead Time	Mold #	Price Key	Weld Metal	Handle Clamps	Lead Time
1/0	M-644	4	90	B-106	2	M-644-H	4	150	B-106	2
2/0	M-645	4	90	B-106	2	M-645-H	4	150	B-106	2
3/0	M-646	4	115	B-106	2	M-646-H	4	200	B-106	2
4/0	M-647	4	115	B-106	SDS	M-647-H	4	200	B-106	2
250 MCM	M-648	4	115	B-106	2	M-648-H	4	200	B-106	2
300 MCM	M-649	4	150	B-106	2	M-649-H	4	250	B-106	2
350 MCM	M-650	4	200	B-106	2	M-650-H	5	2-150	B-107	4
500 MCM	M-652	4	200	B-106	2	M-652-H	5	2-150	B-107	2
750 MCM	M-653	5	2-150	B-107	2	M-653-H	5	500	B-107	4
1000 MCM	M-654	5	2-200	B-107	4	M-654-H	5	3-200	B-107	4

Section 2 - Molds  
AWG Conductors

MOLDS FOR AWG CONDUCTORS					
Cable Size	Mold #	Price Key	Weld Metal	Handle Clamps	Lead Time
#6	M-628	3†	45	Included	2
#4	M-629	3†	45	Included	2
#2	M-630	3†	45	Included	2
#2	M-630-S	3†	45	Included	SDS
#1	M-631	3†	65	Included	2
1/0	M-7146	4	90	B-106	2
2/0	M-7075	4	90	B-106	2
3/0	M-2199	4	115	B-106	2
4/0	M-6114	4	115	B-106	2
250 MCM	M-2200	4	115	B-106	2
300 MCM	M-2506	4	150	B-106	2
350 MCM	M-2507	4	200	B-106	2
500 MCM	M-2509	4	200	B-106	2
750 MCM	M-2542	5	2-150	B-107	2
1000 MCM	M-2511	5	2-200	B-107	4

# CS-8

## TYPE MOLDS

**Horizontal Cable to Horizontal Steel Surface  
For AWG Conductors.**

Note that the cable is **ON** the surface



- **For sizes not listed, contact thermOweld®.**
- Molds listed are for concentric stranded cable. Add suffix "-S" to mold number for solid conductors.
- For molds with wear plates, see page 135.
- For expedited service, contact thermOweld®.
- To order weld metal for use with EZ Lite Remote® insert TW before and EZ after weld metal number.
- Required Tools;
  - Handle Clamps w/ Flint Ignitor (see chart for correct handles)
  - † ~ Sold complete with frame
  - 38-0309-00 ~ Flint Ignitor or 38-EZLT-RU EZ Lite Remote®
- Other recommended accessories;
  - 40-0319-01 ~ Mold Cleaner for cartridge sizes #15-#65 (Price Key 3, CS-8 Molds Only)
  - 38-3922-00 ~ Mold Cleaning Brush
  - 38-0135-00 ~ Cable Cleaning Brush
  - 38-0101-00 ~ Rasp
  - 38-4129-00 ~ Packing Material for 1/0 & Larger Molds (CS-8 Molds Only)

**Welding to Horizontal Pipe:** To weld to horizontal pipe, add pipe size to mold number. Example: To weld 4/0 str cable to 6" horizontal pipe, the mold number would be M-647-6. To weld #1 cable or smaller to pipe 14" and larger, use flat surface mold. For 1/0 cable and larger, use flat surface mold only on pipe 30" and larger.