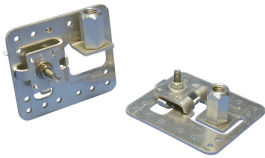


# AIR TERMINAL BASE, STAMPED ADJUSTABLE, IMPERIAL THREAD



## CERTIFICATIONS



## FEATURES

For use on flat, vertical or sloping surfaces

Air terminal support tab is field adjustable, eliminating the need for swivel adaptors

Available pre-configured for vertical applications

Install with adhesive or screw down fixings

Positive single bolt tension for multi-directional cable clamping

## SPECIFICATIONS

Conductor Size, UL: Class 1 - Class 2 (4/0 Max)

Finish: Tinned

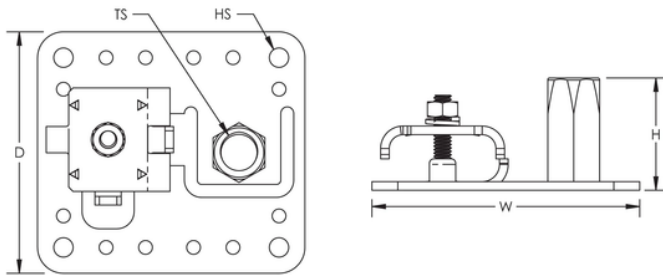
Catalog Number	Material	Thread Size(TS)	Type	Hole Size(HS)	Depth(D)	Width(W)	Height(H)
LPA30212	Aluminum	1/2" UNC	Flat	9/32"	3 1/2"	4"	1 3/8"
LPA30212V	Aluminum	1/2" UNC	Vertical	9/32"	3 1/2"	4"	1 3/8"
LPA30258	Aluminum	5/8" UNC	Flat	9/32"	3 1/2"	4"	1 3/8"
LPA30258V	Aluminum	5/8" UNC	Vertical	9/32"	3 1/2"	4"	1 3/8"
LPC30212	Bronze, Brass	1/2" UNC	Flat	9/32"	3 1/2"	4"	1 3/8"
LPC30212V	Bronze, Brass	1/2" UNC	Vertical	9/32"	3 1/2"	4"	1 3/8"

Catalog Number	Material	Thread Size(TS)	Type	Hole Size(HS)	Depth(D)	Width(W)	Height(H)
LPC30238	Bronze, Brass	3/8" UNC	Flat	9/32"	3 1/2"	4"	1 3/8"
LPC30238V	Bronze, Brass	3/8" UNC	Vertical	9/32"	3 1/2"	4"	1 3/8"
LPC30258	Bronze, Brass	5/8" UNC	Flat	9/32"	3 1/2"	4"	1 3/8"
LPC30258V	Bronze, Brass	5/8" UNC	Vertical	9/32"	3 1/2"	4"	1 3/8"
LPC302L12	Bronze, Brass	1/2" UNC	Flat	9/32"	3 1/2"	4"	1 3/8"
LPC302L12V	Bronze, Brass	1/2" UNC	Vertical	9/32"	3 1/2"	4"	1 3/8"
LPC302L38	Bronze, Brass	3/8" UNC	Flat	9/32"	3 1/2"	4"	1 3/8"
LPC302L38V	Bronze, Brass	3/8" UNC	Vertical	9/32"	3 1/2"	4"	1 3/8"
LPC302L58	Bronze, Brass	5/8" UNC	Flat	9/32"	3 1/2"	4"	1 3/8"
LPC302L58V	Bronze, Brass	5/8" UNC	Vertical	9/32"	3 1/2"	4"	1 3/8"
LPC302M16	Bronze, Brass	M16	Flat	9/32"	3 1/2"	4"	1 3/8"

## ADDITIONAL PRODUCT DETAILS

Vertical type bases are factory pre-configured for vertical mount applications.

## DIAGRAMS



## WARNING

nVent products shall be installed and used only as indicated in nVent's product instruction sheets and training materials. Instruction sheets are available at [www.nvent.com](http://www.nvent.com) and from your nVent customer service representative. Improper installation, misuse, misapplication or other failure to completely follow nVent's instructions and warnings may cause product malfunction, property damage, serious bodily injury and death and/or void your warranty.

**⚠ WARNING:** This product can expose you to chemicals including lead, which is known to the State of California to cause cancer and birth defects or other reproductive harm. For more information go to [www.P65Warnings.ca.gov](http://www.P65Warnings.ca.gov).

**North America**

+1.800.753.9221

Option 1 – Customer Care

Option 2 – Technical Support

**Europe**

Netherlands:

+31 800-0200135

France:

+33 800 901 793

**Europe**

Germany:

800 1890272

Other Countries:

+31 13 5835404

**APAC**

Shanghai:

+ 86 21 2412 1618/19

Sydney:

+61 2 9751 8500



Our powerful portfolio of brands:  
**nVent.com CADDY ERICO HOFFMAN RAYCHEM SCHROFF**  
**TRACER**